

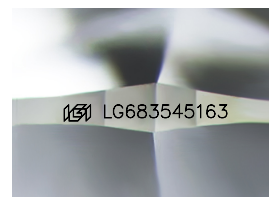
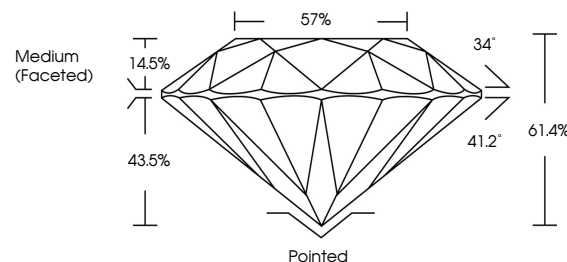


**ELECTRONIC COPY**

## LABORATORY GROWN DIAMOND REPORT

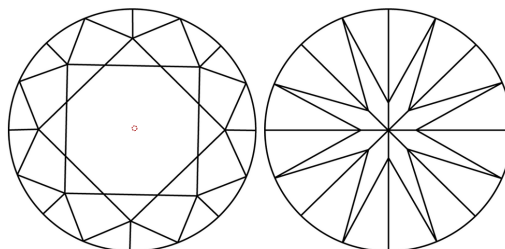
LG683545163  
Report verification at [lgi.org](https://lgi.org)

## PROPORTIONS



Sample Image Used

## CLARITY CHARACTERISTICS



## KEY TO SYMBOLS

Red symbols indicate internal characteristics.  
Green symbols indicate external characteristics.

## COLOR

D E F G H I J Faint Very Light Light

## CLARITY

IF WS<sup>1-2</sup> VS<sup>1-2</sup> SI<sup>1-2</sup> |<sup>1-3</sup>

Internally Flawless	Very Very Slightly Included	Very Slightly Included	Slightly Included	Included
------------------------	--------------------------------	---------------------------	----------------------	----------



© IGI 2020, International Gemological Institute

FD - 10 20

**www.igi.org**

## LABORATORY GROWN DIAMOND REPORT



February 27, 2025

IGI Report Number **LG683545163**Description **LABORATORY GROWN DIAMOND**Shape and Cutting Style **ROUND BRILLIANT**

Measurements 6.57 - 6.60 X 4.04 MM

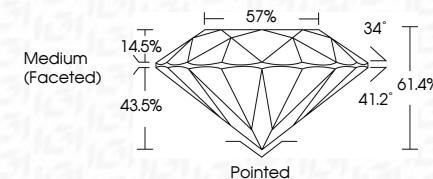
## GRADING RESULTS

Carat Weight 1.06 CARAT

Color Grade

Clarity Grade WS 1

Cut Grade **IDEAL**



### ADDITIONAL GRADING INFORMATION

Polish EXCELLENT

Symmetry **EXCELLENT**Fluorescence **NONE**Inscription(s)  LG683545163

Comments: As Grown - No indication of post-growth treatment.

This Laboratory Grown Diamond was created by High Pressure High Temperature (HPHT) growth process.

Type II



January 27, 2025	1.06 CARAT	
GI Report No. LG258354163	E	
ROUND BRILLIANT	VVS 1	
1.57 - 6.50 X 4.04 MM	IDEAL	
	61.4%	
	57%	
	Medium (Fossilco)	
Carat Weight	Polished	
Color Grade	EXCELLENT	
Cutty Grade	EXCELLENT	
Cur Grade	NONE	
Depth	#69 LG258354163	
Table		
Girdle		
Culet		
Polish		
Symmetry		
Fluorescence		
Inscriptions(s)		
Comments:		
As Grown - No indication of post-growth		
from this Laboratory. Grown Diamond was		
created by High Pressure High		
temperature (HPHT) growth process.		
Type I		