



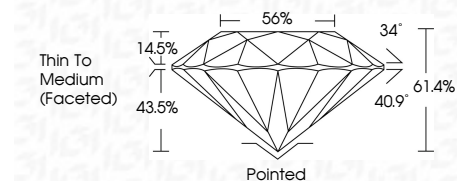
ELECTRONIC COPY

LG683543851 Report verification at igi.org



March 4, 2025 IGI Report Number LG683543851 Description LABORATORY GROWN DIAMOND Shape and Cutting Style ROUND BRILLIANT Measurements 6.85 - 6.86 X 4.21 MM

GRADING RESULTS Carat Weight 1.20 CARAT Color Grade E Clarity Grade VS 1 Cut Grade IDEAL



ADDITIONAL GRADING INFORMATION Polish EXCELLENT Symmetry EXCELLENT Fluorescence NONE Inscription(s) LG683543851 Comments: As Grown - No indication of post-growth treatment. This Laboratory Grown Diamond was created by High Pressure High Temperature (HPHT) growth process. Type II



March 4, 2025 IGI Report No. LG683543851 ROUND BRILLIANT 1.20 CARAT E 6.85 - 6.86 X 4.21 MM Color Grade E Clarity Grade VS 1 Depth 61.4% Table 56% Thin To Medium (Faceted) Pointed EXCELLENT EXCELLENT NONE NONE LG683543851

LABORATORY GROWN DIAMOND REPORT

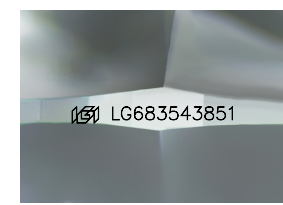
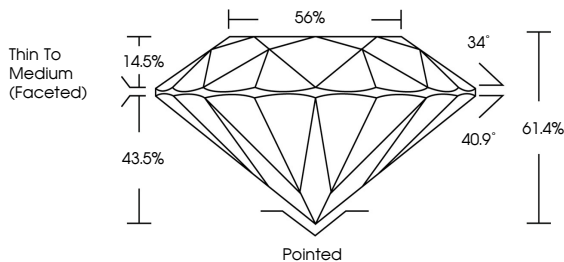
March 4, 2025 IGI Report Number LG683543851 Description LABORATORY GROWN DIAMOND Shape and Cutting Style ROUND BRILLIANT Measurements 6.85 - 6.86 X 4.21 MM

GRADING RESULTS Carat Weight 1.20 CARAT Color Grade E Clarity Grade VS 1 Cut Grade IDEAL

ADDITIONAL GRADING INFORMATION Polish EXCELLENT Symmetry EXCELLENT Fluorescence NONE Inscription(s) LG683543851

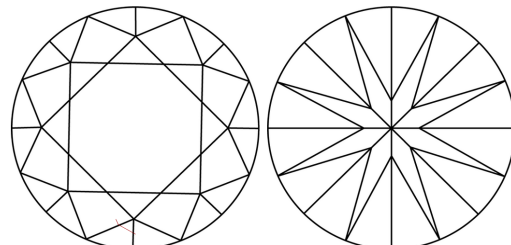
Comments: As Grown - No indication of post-growth treatment. This Laboratory Grown Diamond was created by High Pressure High Temperature (HPHT) growth process. Type II

PROPORTIONS



Sample Image Used

CLARITY CHARACTERISTICS



KEY TO SYMBOLS Red symbols indicate internal characteristics. Green symbols indicate external characteristics.

Color scale table with categories: D, E, F, G, H, I, J, Faint, Very Light, Light

Clarity scale table with categories: IF, VS 1-2, VS 1-2, SI 1-2, I 1-3, Internally Flawless, Very Very Slightly Included, Very Slightly Included, Slightly Included, Included



Comments: As Grown - No indication of post-growth treatment. This Laboratory Grown Diamond was created by High Pressure High Temperature (HPHT) growth process. Type II