



ELECTRONIC COPY

LG683536805 Report verification at igi.org



March 5, 2025

IGI Report Number LG683536805

Description LABORATORY GROWN DIAMOND

Shape and Cutting Style PRINCESS CUT

Measurements 5.67 X 5.64 X 4.05 MM

GRADING RESULTS

Carat Weight 1.09 CARAT

Color Grade E

Clarity Grade VVS 1

March 5, 2025
IGI Report Number LG683536805
Description LABORATORY GROWN DIAMOND
Shape and Cutting Style PRINCESS CUT
Measurements 5.67 X 5.64 X 4.05 MM

GRADING RESULTS

Carat Weight 1.09 CARAT

Color Grade E

Clarity Grade VVS 1

ADDITIONAL GRADING INFORMATION

Polish EXCELLENT

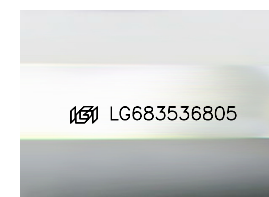
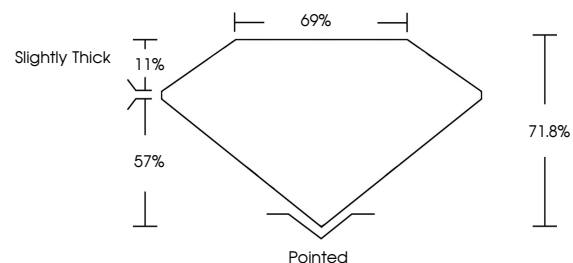
Symmetry EXCELLENT

Fluorescence NONE

Inscription(s) IGI LG683536805

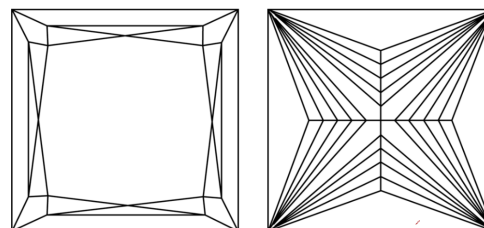
Comments: This Laboratory Grown Diamond was created by Chemical Vapor Deposition (CVD) growth process. Type IIa. Indications of post-growth treatment.

PROPORTIONS



Sample Image Used

CLARITY CHARACTERISTICS



KEY TO SYMBOLS

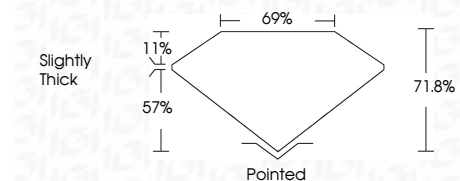
Red symbols indicate internal characteristics. Green symbols indicate external characteristics.

COLOR

D E F G H I J Faint Very Light Light

CLARITY

IF VVS 1-2 VS 1-2 SI 1-2 I 1-3
Internally Flawless Very Very Slightly Included Very Slightly Included Slightly Included Included



ADDITIONAL GRADING INFORMATION

Polish EXCELLENT

Symmetry EXCELLENT

Fluorescence NONE

Inscription(s) IGI LG683536805

Comments: This Laboratory Grown Diamond was created by Chemical Vapor Deposition (CVD) growth process. Type IIa. Indications of post-growth treatment.



March 5, 2025
IGI Report No. LG683536805
PRINCESS CUT
1.09 CARAT E
5.67 X 5.64 X 4.05 MM
Carat Weight
Color Grade VVS 1
Clarity Grade 71.0% 69%
Depth 57%
Table 69%
Girdle Slightly Thick
Culet Pointed
Polish EXCELLENT
Symmetry EXCELLENT
Fluorescence NONE
Inscription(s) IGI LG683536805
Comments: This Laboratory Grown Diamond was created by Chemical Vapor Deposition (CVD) growth process. Type IIa. Indications of post-growth treatment.