

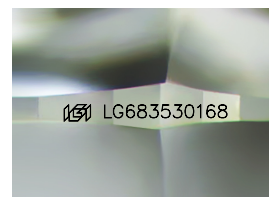
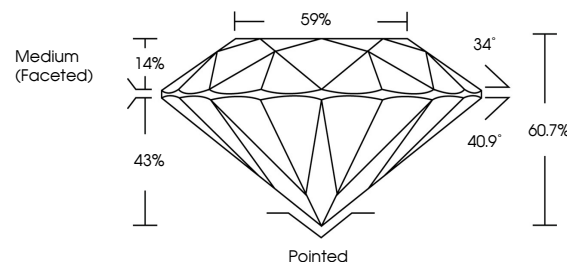


ELECTRONIC COPY

LABORATORY GROWN DIAMOND REPORT

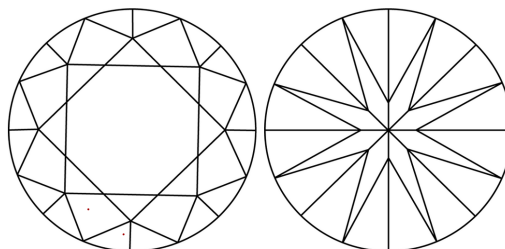
LG683530168
Report verification at lgi.org

PROPORTIONS



Sample Image Used

CLARITY CHARACTERISTICS



KEY TO SYMBOLS

Red symbols indicate internal characteristics.
Green symbols indicate external characteristics.

COLOR

D E F G H I J Faint Very Light Light

CLARITY

IF WS¹⁻² VS¹⁻² SI¹⁻² |¹⁻³

Internally Flawless	Very Very Slightly Included	Very Slightly Included	Slightly Included	Included
------------------------	--------------------------------	---------------------------	----------------------	----------



February 20, 2025

IGI Report Number **LG683530168**

Description	LABORATORY GROWN DIAMOND
-------------	--------------------------

Shape and Cutting Style **ROUND BRILLIANT**

Measurements 7.59 - 7.62 X 4.62 MM

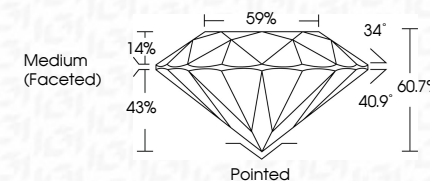
GRADING RESULTS

Carat Weight **1.64 CARAT**

Color Grade E

Clarity Grade **VVS 2**

Cut Grade **IDEAL**



ADDITIONAL GRADING INFORMATION

Polish **EXCELLENT**Symmetry **EXCELLENT**Fluorescence **NONE**Inscription(s) LG683530168

Comments: This Laboratory Grown Diamond was created by Chemical Vapor Deposition (CVD) growth process.
Type IIa



© IGI 2020, International Gemological Institute

FD - 10 20



THIS DOCUMENT WAS PRODUCED WITH THE FOLLOWING SECURITY MEASURES: SPECIAL DOCUMENT PAPER, INK SCREENS, WATERMARK, BACKGROUND DESIGNS, HOLOGRAM AND OTHER SECURITY FEATURES NOT LISTED AND DO EXCEED DOCUMENT SECURITY INDUSTRY GUIDELINES

www.igi.org

February 20, 2025	
GI Report No LG68330148	
ROUND BRILLIANT	
	1.64 CARAT
	E
	VVS 2
	IDEAL
	60.7%
	59%
	Medium (Faceted)
	Poited
	EXCELLENT
	EXCELLENT
	NONE
	#691LG68330148

Comments:
 This is a Natural Color Diamond was
 created by Chemical Vapor Deposition
 (CVD) growth process.
 Type IIa