



**INTERNATIONAL  
GEMOLOGICAL  
INSTITUTE**

**LABORATORY GROWN DIAMOND REPORT**

February 19, 2025  
 IGI Report Number **LG683527698**  
 Description **LABORATORY GROWN DIAMOND**  
 Shape and Cutting Style **ROUND BRILLIANT**  
 Measurements **4.88 - 4.90 X 3.01 MM**

**GRADING RESULTS**

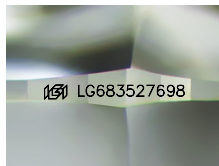
Carat Weight **0.44 CARAT**  
 Color Grade **FANCY INTENSE PINK**  
 Clarity Grade **VS 1**  
 Cut Grade **IDEAL**

**ADDITIONAL GRADING INFORMATION**

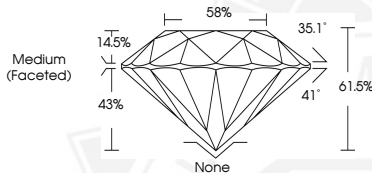
Polish **EXCELLENT**  
 Symmetry **EXCELLENT**  
 Fluorescence **SLIGHT**  
 Inscription(s) **IGI LG683527698**

Comments: HEARTS & ARROWS  
 This Laboratory Grown Diamond was created by Chemical Vapor  
 Deposition (CVD) growth process.  
 Indications of post-growth treatment.

**ELECTRONIC COPY**



Sample Image Used



HEARTS & ARROWS



February 19, 2025  
 IGI Report Number **LG683527698**  
 ROUND BRILLIANT  
 LABORATORY GROWN DIAMOND  
 4.88 - 4.90 X 3.01 MM  
 Carat Weight **0.44 CARAT**  
 Color Grade **FANCY INTENSE PINK**  
 Clarity Grade **VS 1**  
 Cut Grade **IDEAL**  
 Polish **EXCELLENT**  
 Symmetry **EXCELLENT**  
 Fluorescence **SLIGHT**  
 Inscription(s) **IGI LG683527698**

Comments: HEARTS & ARROWS This Laboratory Grown Diamond was created by Chemical Vapor Deposition (CVD) growth process. Indications of post-growth treatment.



February 19, 2025  
 IGI Report Number **LG683527698**  
 ROUND BRILLIANT  
 LABORATORY GROWN DIAMOND  
 4.88 - 4.90 X 3.01 MM  
 Carat Weight **0.44 CARAT**  
 Color Grade **FANCY INTENSE PINK**  
 Clarity Grade **VS 1**  
 Cut Grade **IDEAL**  
 Polish **EXCELLENT**  
 Symmetry **EXCELLENT**  
 Fluorescence **SLIGHT**  
 Inscription(s) **IGI LG683527698**

Comments: HEARTS & ARROWS This Laboratory Grown Diamond was created by Chemical Vapor Deposition (CVD) growth process. Indications of post-growth treatment.

THIS DOCUMENT WAS PRODUCED WITH THE FOLLOWING SECURITY MEASURES: SPECIAL DOCUMENT PAPER, INK SCREENS, WATERMARK, BACKGROUND DESIGN, HOLOGRAM AND OTHER SECURITY FEATURES NOT LISTED AND DO EXCEED DOCUMENT SECURITY INDUSTRY GUIDELINES.

For terms & conditions and to verify this report, please visit [www.igi.org](http://www.igi.org)