



INTERNATIONAL GEMOLOGICAL INSTITUTE

LABORATORY GROWN DIAMOND REPORT

February 17, 2025
IGI Report Number **LG683527693**
Description **LABORATORY GROWN DIAMOND**
Shape and Cutting Style **ROUND BRILLIANT**
Measurements **4.79 - 4.82 X 2.88 MM**

GRADING RESULTS

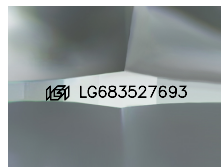
Carat Weight **0.40 CARAT**
Color Grade **FANCY INTENSE PINK**
Clarity Grade **SI 1**
Cut Grade **IDEAL**

ADDITIONAL GRADING INFORMATION

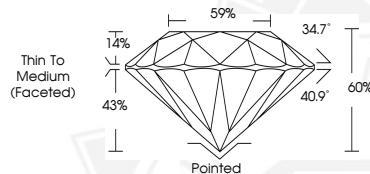
Polish **EXCELLENT**
Symmetry **EXCELLENT**
Fluorescence **SLIGHT**
Inscription(s) **IGI LG683527693**

Comments: HEARTS & ARROWS
This Laboratory Grown Diamond was created by Chemical Vapor
Deposition (CVD) growth process.
Indications of post-growth treatment.

ELECTRONIC COPY



Sample Image Used



HEARTS & ARROWS



February 17, 2025
IGI Report Number **LG683527693**
ROUND BRILLIANT
LABORATORY GROWN DIAMOND
4.79 - 4.82 X 2.88 MM
Carat Weight **0.40 CARAT**
Color Grade **FANCY INTENSE PINK**
Clarity Grade **SI 1**
Cut Grade **IDEAL**
Polish **EXCELLENT**
Symmetry **EXCELLENT**
Fluorescence **SLIGHT**
Inscription(s) **IGI LG683527693**

Comments: HEARTS & ARROWS This Laboratory Grown Diamond was created by Chemical Vapor Deposition (CVD) growth process. Indications of post-growth treatment.



February 17, 2025
IGI Report Number **LG683527693**
ROUND BRILLIANT
LABORATORY GROWN DIAMOND
4.79 - 4.82 X 2.88 MM
Carat Weight **0.40 CARAT**
Color Grade **FANCY INTENSE PINK**
Clarity Grade **SI 1**
Cut Grade **IDEAL**
Polish **EXCELLENT**
Symmetry **EXCELLENT**
Fluorescence **SLIGHT**
Inscription(s) **IGI LG683527693**

Comments: HEARTS & ARROWS This Laboratory Grown Diamond was created by Chemical Vapor Deposition (CVD) growth process. Indications of post-growth treatment.



THIS DOCUMENT WAS PRODUCED WITH THE FOLLOWING SECURITY MEASURES: SPECIAL DOCUMENT PAPER, INK SCREENS, WATERMARK, BACKGROUND DESIGNS, HOLOGRAM AND OTHER SECURITY FEATURES NOT LISTED AND DO EXCEED DOCUMENT SECURITY INDUSTRY GUIDELINES.

For terms & conditions and to verify this report, please visit www.igi.org