



**ELECTRONIC COPY**

## LABORATORY GROWN DIAMOND REPORT

|                         |                          |
|-------------------------|--------------------------|
| March 7, 2025           |                          |
| IGI Report Number       | LG683522298              |
| Description             | LABORATORY GROWN DIAMOND |
| Shape and Cutting Style | ROUND BRILLIANT          |
| Measurements            | 6.52 - 6.54 X 4.01 MM    |

## GRADING RESULTS

|               |            |
|---------------|------------|
| Carat Weight  | 1.05 CARAT |
| Color Grade   | E          |
| Clarity Grade | VVS 2      |
| Cut Grade     | IDEAL      |

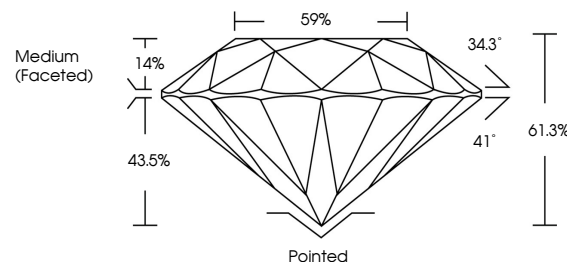
### ADDITIONAL GRADING INFORMATION

|                |                 |
|----------------|-----------------|
| Polish         | EXCELLENT       |
| Symmetry       | EXCELLENT       |
| Fluorescence   | NONE            |
| Inscription(s) | 151 LG683522298 |

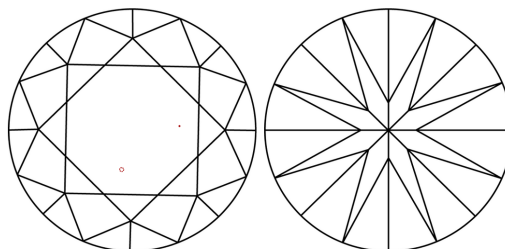
Comments: This Laboratory Grown Diamond was created by Chemical Vapor Deposition (CVD) growth process. Type IIa. Indications of post-growth treatment.

LG683522298  
Report verification at [lgi.org](https://lgi.org)

## PROPORTIONS

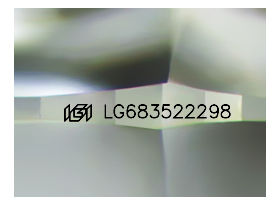


## CLARITY CHARACTERISTICS



### KEY TO SYMBOLS

Red symbols indicate internal characteristics.  
Green symbols indicate external characteristics.



Sample Image Used

## COLOR

D E F G H I J Faint Very Light Light

## CLARITY

IF                      VS<sup>1-2</sup>                      VS<sup>1-2</sup>                      SI<sup>1-2</sup>                      |<sup>1-3</sup>

|                        |                                |                           |                      |          |
|------------------------|--------------------------------|---------------------------|----------------------|----------|
| Internally<br>Flawless | Very Very<br>Slightly Included | Very<br>Slightly Included | Slightly<br>Included | Included |
|------------------------|--------------------------------|---------------------------|----------------------|----------|

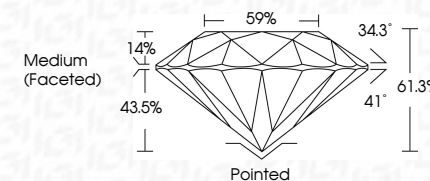
## LABORATORY GROWN DIAMOND REPORT



|                         |                          |
|-------------------------|--------------------------|
| March 7, 2025           |                          |
| IGI Report Number       | LG683522298              |
| Description             | LABORATORY GROWN DIAMOND |
| Shape and Cutting Style | ROUND BRILLIANT          |
| Measurements            | 6.52 - 6.54 X 4.01 MM    |

## GRADING RESULTS

|               |            |
|---------------|------------|
| Carat Weight  | 1.05 CARAT |
| Color Grade   | E          |
| Clarity Grade | VVS 2      |
| Cut Grade     | IDEAL      |



### ADDITIONAL GRADING INFORMATION

|                |  |
|----------------|--|
| Polish         | EXCELLENT  |
| Symmetry       | EXCELLENT  |
| Fluorescence   | NONE   |
| Inscription(s) |  LG-683522298 |

Comments: This Laboratory Grown Diamond was created by Chemical Vapor Deposition (CVD) growth process, Type IIa. Indications of post-growth treatment.



© IGI 2020, International Gemological Institute

FD - 10 20



THIS DOCUMENT WAS PRODUCED WITH THE FOLLOWING SECURITY MEASURES: SPECIAL DOCUMENT PAPER, INK SCREENS, WATERMARK, BACKGROUND DESIGNS, HOLOGRAM AND OTHER SECURITY FEATURES NOT LISTED AND DO EXCEED DOCUMENT SECURITY INDUSTRY GUIDELINE

**www.igi.org**

