



ELECTRONIC COPY

LABORATORY GROWN DIAMOND REPORT

February 25, 2025  
IGI Report Number LG683521907  
Description LABORATORY GROWN DIAMOND  
Shape and Cutting Style CUT CORNERED RECTANGULAR MODIFIED BRILLIANT  
Measurements 7.76 X 5.51 X 3.76 MM

GRADING RESULTS

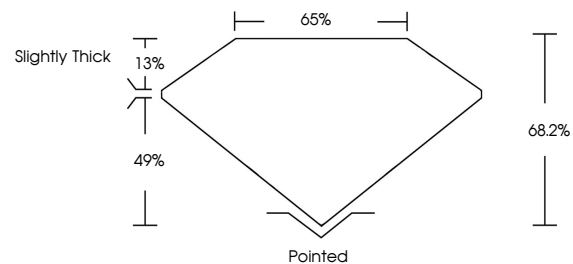
Carat Weight 1.55 CARAT  
Color Grade FANCY VIVID YELLOW  
Clarity Grade VVS 2

ADDITIONAL GRADING INFORMATION

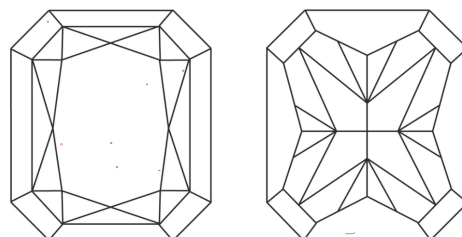
Polish EXCELLENT  
Symmetry EXCELLENT  
Fluorescence NONE  
Inscription(s) IGI LG683521907

Comments: This Laboratory Grown Diamond was created by Chemical Vapor Deposition (CVD) growth process.

PROPORTIONS

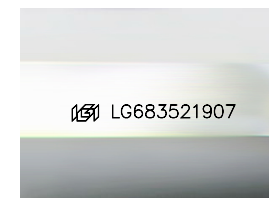


CLARITY CHARACTERISTICS



KEY TO SYMBOLS

Red symbols indicate internal characteristics.  
Green symbols indicate external characteristics.



Sample Image Used

COLOR

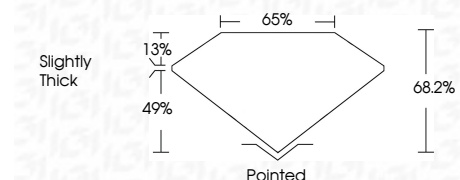
D E F G H I J Faint Very Light Light

CLARITY

IF WS<sup>1-2</sup> VS<sup>1-2</sup> SI<sup>1-2</sup> I<sup>1-3</sup>  
Internally Flawless Very Very Slightly Included Very Slightly Included Slightly Included Included



February 25, 2025  
IGI Report Number LG683521907  
Description LABORATORY GROWN DIAMOND  
Shape and Cutting Style CUT CORNERED RECTANGULAR MODIFIED BRILLIANT  
Measurements 7.76 X 5.51 X 3.76 MM  
GRADING RESULTS  
Carat Weight 1.55 CARAT  
Color Grade FANCY VIVID YELLOW  
Clarity Grade VVS 2



ADDITIONAL GRADING INFORMATION

Polish EXCELLENT  
Symmetry EXCELLENT  
Fluorescence NONE  
Inscription(s) IGI LG683521907  
Comments: This Laboratory Grown Diamond was created by Chemical Vapor Deposition (CVD) growth process.



February 25, 2025  
IGI Report No LG683521907  
CUT CORNERED RECT. MODIFIED BRILLIANT  
7.76 X 5.51 X 3.76 MM  
1.55 CARAT  
FANCY VIVID YELLOW  
VVS 2  
68.2%  
65%  
Slightly Thick  
Pointed  
EXCELLENT  
EXCELLENT  
NONE  
IGI LG683521907  
Comments: This Laboratory Grown Diamond was created by Chemical Vapor Deposition (CVD) growth process.