



ELECTRONIC COPY

LABORATORY GROWN DIAMOND REPORT

LG683515476
Report verification at igi.org

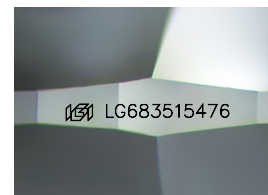
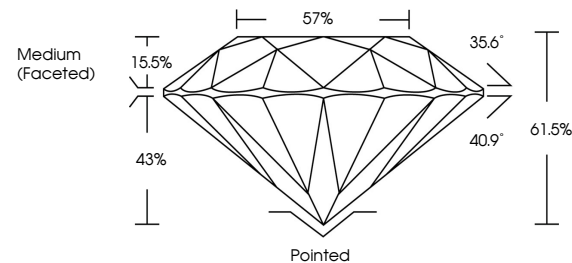
| | |
|-------------------------|--------------------------|
| May 9, 2025 | |
| IGI Report Number | LG683515476 |
| Description | LABORATORY GROWN DIAMOND |
| Shape and Cutting Style | ROUND BRILLIANT |
| Measurements | 7.42 - 7.45 X 4.57 MM |
| GRADING RESULTS | |
| Carat Weight | 1.53 CARAT |
| Color Grade | D |
| Clarity Grade | VVS 2 |
| Cut Grade | IDEAL |

ADDITIONAL GRADING INFORMATION

| | |
|----------------|---|
| Polish | EXCELLENT |
| Symmetry | EXCELLENT |
| Fluorescence | NONE |
| Inscription(s) |  LG683515476 |

Comments: As Grown - No indication of post-growth treatment.
This Laboratory Grown Diamond was created by High Pressure High Temperature (HPHT) growth process.
Type II

PROPORTIONS



Sample Image Used

COLOR

D E F G H I J Faint Very Light Light

CLARITY

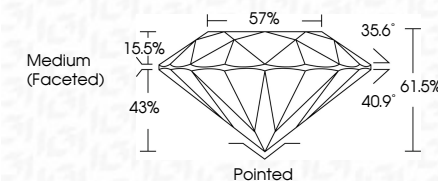
IF WS¹⁻² VS¹⁻² SI¹⁻² I¹⁻³

| Internally Flawless | Very Very Slightly Included | Very Slightly Included | Slightly Included | Included |
|------------------------|--------------------------------|---------------------------|----------------------|----------|
|------------------------|--------------------------------|---------------------------|----------------------|----------|

LABORATORY GROWN DIAMOND REPORT



| | |
|-------------------------|--------------------------|
| May 9, 2025 | |
| IGI Report Number | LG683515476 |
| Description | LABORATORY GROWN DIAMOND |
| Shape and Cutting Style | ROUND BRILLIANT |
| Measurements | 7.42 - 7.45 X 4.57 MM |
| GRADING RESULTS | |
| Carat Weight | 1.53 CARAT |
| Color Grade | D |
| Clarity Grade | VVS 2 |
| Cut Grade | IDEAL |



ADDITIONAL GRADING INFORMATION

| | |
|--|----------------------------|
| Polish | EXCELLENT |
| Symmetry | EXCELLENT |
| Fluorescence | NONE |
| Inscription(s) | (G) LG683515476 |
| <p>Comments: As Grown - No indication of post-growth treatment.</p> <p>This Laboratory Grown Diamond was created by High Pressure High Temperature (HPHT) growth process.</p> <p>Type II</p> | |



© IGI 2020, International Gemological Institute

FD - 10 20



THIS DOCUMENT WAS PRODUCED WITH THE FOLLOWING SECURITY MEASURES: SPECIAL DOCUMENT PAPER, INK SCREENS, WATERMARK, BACKGROUND DESIGNS, HOLOGRAM, AND OTHER SECURITY FEATURES NOT LISTED AND DO EXCEED DOCUMENT SECURITY INDUSTRY GUIDELINES.

www.igi.org

| | | |
|---------------------------|-----------------|--|
| May 9, 2025 | Carat Weight | 1.53 CARAT |
| GI Report No. LG638515476 | Color Grade | D |
| ROUND BRILLIANT | Clarity Grade | VVS 2 |
| | Color | IDEAL |
| | Depth | 61.5% |
| | Table | 57% |
| | Grades | Medium (Faceted) |
| | Culet | Polished |
| | Polish | EXCELLENT |
| | Symmetry | EXCELLENT |
| | Fluorescence | NONE |
| | Inscriptions(s) | 6381 LG638515476 |
| | Comments: | |
| | | Grown - No indication of post-growth treatment. |
| | | This Laboratory Grown Diamond was created by High Pressure High Temperature (HPHT) growth process. |