



ELECTRONIC COPY

LABORATORY GROWN DIAMOND REPORT

| | |
|-------------------------|--|
| February 12, 2025 | |
| IGI Report Number | LG682505103 |
| Description | LABORATORY GROWN DIAMOND |
| Shape and Cutting Style | CUT CORNERED RECTANGULAR MODIFIED BRILLIANT |
| Measurements | 9.11 X 6.32 X 4.23 MM |

GRADING RESULTS

| | |
|---------------|-------------|
| Carat Weight | 2.10 CARATS |
| Color Grade | F |
| Clarity Grade | VS 1 |

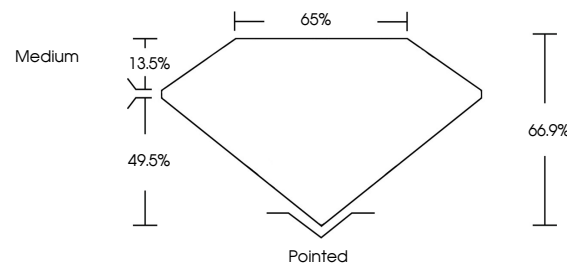
ADDITIONAL GRADING INFORMATION

| | |
|----------------|---|
| Polish | EXCELLENT |
| Symmetry | EXCELLENT |
| Fluorescence | NONE |
| Inscription(s) |  LG682505103 |

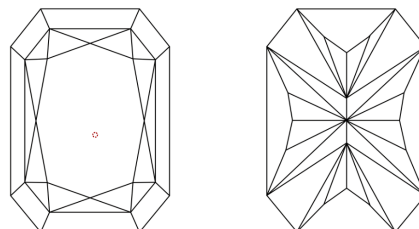
Comments: This Laboratory Grown Diamond was created by Chemical Vapor Deposition (CVD) growth process.
Type IIa

LG682505103
Report verification at lqi.org

PROPORTIONS

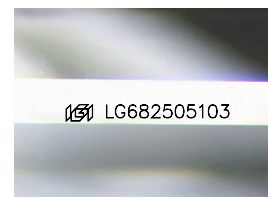


CLARITY CHARACTERISTICS



KEY TO SYMBOLS

Red symbols indicate internal characteristics.
Green symbols indicate external characteristics.



Sample Image Used

COLOR

D E F G H I J Faint Very Light Light

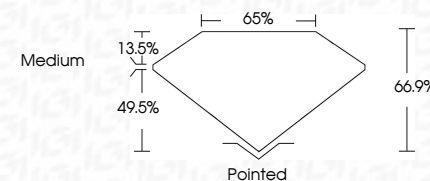
CLARITY

| IF | VS ¹⁻² | VS ¹⁻² | SI ¹⁻² | I ¹⁻³ |
|---------------------|-----------------------------|------------------------|-------------------|------------------|
| Internally Flawless | Very Very Slightly Included | Very Slightly Included | Slightly Included | Included |

LABORATORY GROWN DIAMOND REPORT



| | |
|-------------------------|---|
| February 12, 2025 | |
| IGI Report Number | LG682505103 |
| Description | LABORATORY GROWN DIAMOND |
| Shape and Cutting Style | CUT CORNERED RECTANGULAR MODIFIED BRILLIANT |
| Measurements | 9.11 X 6.32 X 4.23 MM |
| GRADING RESULTS | |
| Carat Weight | 2.10 CARATS |
| Color Grade | F |
| Clarity Grade | VS 1 |



ADDITIONAL GRADING INFORMATION

| | |
|--|---|
| Polish | EXCELLENT |
| Symmetry | EXCELLENT |
| Fluorescence | NONE |
| Inscription(s) |  LG682505103 |
| Comments: This Laboratory Grown Diamond was created by Chemical Vapor Deposition (CVD) growth process. | |
| Type IIa | |



© IGI 2020, International Gemological Institute

FD - 10 20



THIS DOCUMENT WAS PRODUCED WITH THE FOLLOWING SECURITY MEASURES: SPECIAL DOCUMENT PAPER, INK SCREENS, WATERMARK, BACKGROUND DESIGNS, HOLOGRAM AND OTHER SECURITY FEATURES NOT LISTED AND DO EXCEED DOCUMENT SECURITY INDUSTRY GUIDELINES

www.igi.org

| | | | |
|-------------------|--------------------------|-----------------------|------------------|
| February 12, 2025 | GI Report No LG462505103 | 2.11 X 6.92 X 4.23 MM | 2.10 CARATS |
| Color | Clarity | Depth | VS 1 |
| Weight | Table | Grade | 66.9% |
| Color Grade | | | 65% |
| | | | Medium |
| | Culet | | Pointed |
| | Polish | | EXCELLENT |
| | Symmetry | | EXCELLENT |
| | Fluorescence | | NONE |
| Inscriptions(s) | | | sent LG462505103 |

Comments:
This Laboratory Grown Diamond was
created by Chemical Vapor Deposition
(CVD) growth process.