



ELECTRONIC COPY

LABORATORY GROWN DIAMOND REPORT

February 11, 2025	
IGI Report Number	LG681598663
Description	LABORATORY GROWN DIAMOND
Shape and Cutting Style	CUT CORNERED RECTANGULAR MODIFIED BRILLIANT
Measurements	12.15 X 8.33 X 5.67 MM

GRADING RESULTS

Carat Weight	5.09 CARATS
Color Grade	E
Clarity Grade	VS 1

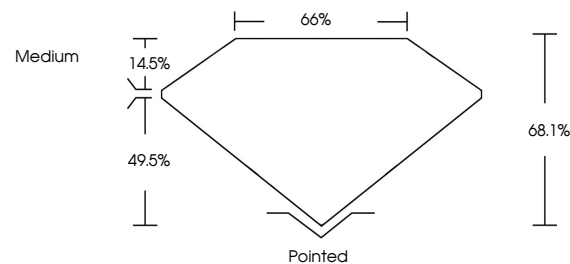
ADDITIONAL GRADING INFORMATION

Polish	EXCELLENT
Symmetry	EXCELLENT
Fluorescence	NONE
Inscription(s)	 LG681598663

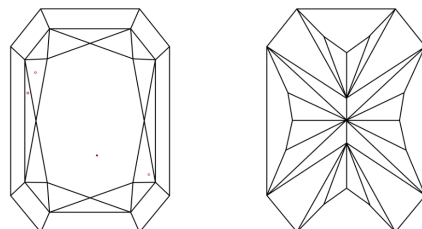
Comments: This Laboratory Grown Diamond was created by Chemical Vapor Deposition (CVD) growth process.
Type IIa

LG681598663
Report verification at lgi.org

PROPORTIONS

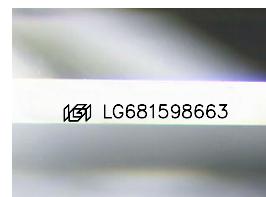


CLARITY CHARACTERISTICS



KEY TO SYMBOLS

Red symbols indicate internal characteristics.
Green symbols indicate external characteristics.



Sample Image Used

COLOR

D E F G H I J Faint Very Light Light

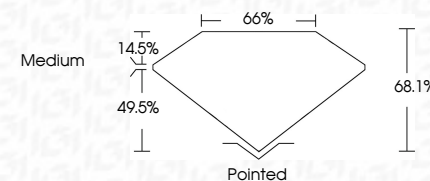
CLARITY

IF	VS ¹⁻²	VS ¹⁻²	SI ¹⁻²	I ¹⁻³
Internally Flawless	Very Very Slightly Included	Very Slightly Included	Slightly Included	Included

LABORATORY GROWN DIAMOND REPORT



February 11, 2025	
IGI Report Number	LG681598663
Description	LABORATORY GROWN DIAMOND
Shape and Cutting Style	CUT CORNERED RECTANGULAR MODIFIED BRILLIANT
Measurements	12.15 X 8.33 X 5.67 MM
GRADING RESULTS	
Carat Weight	5.09 CARATS
Color Grade	E
Clarity Grade	VS 1



ADDITIONAL GRADING INFORMATION

Polish	EXCELLENT
Symmetry	EXCELLENT
Fluorescence	NONE
Inscription(s)	 LG681598663
Comments: This Laboratory Grown Diamond was created by Chemical Vapor Deposition (CVD) growth process.	
Type IIa	



IG



© IGI 2020, International Gemological Institute

FD - 10 20



THIS DOCUMENT WAS PRODUCED WITH THE FOLLOWING SECURITY MEASURES: SPECIAL DOCUMENT PAPER, INK SCREENS, WATERMARK, BACKGROUND DESIGNS, HOLOGRAM, AND OTHER SECURITY FEATURES NOT LISTED AND DO EXCEED DOCUMENT SECURITY INDUSTRY GUIDELINES.

www.igi.org

February 11, 2025	GI Report No. LG48159663
CUT CORNERED RECT. MODIFIED BRILLIANT	
5.09 CARATS	VS 1
	68.1%
	66%
	Medium
	Pointed
	EXCELLENT
	EXCELLENT
	NONE
	681 LG48159663

Comments: This is a Fancy Crown Diamond was created by Chemical Vapor Deposition (CVD) growth process.

Type IIG