



ELECTRONIC COPY

LG681591690
Report verification at igi.org



February 11, 2025

IGI Report Number **LG681591690**

Description **LABORATORY GROWN DIAMOND**

Shape and Cutting Style **ROUND BRILLIANT**

Measurements **11.80 - 11.87 X 7.11 MM**

GRADING RESULTS

Carat Weight **6.02 CARATS**

Color Grade **D**

Clarity Grade **VVS 2**

Cut Grade **IDEAL**

February 11, 2025

IGI Report Number **LG681591690**

Description **LABORATORY GROWN DIAMOND**

Shape and Cutting Style **ROUND BRILLIANT**

Measurements **11.80 - 11.87 X 7.11 MM**

GRADING RESULTS

Carat Weight **6.02 CARATS**

Color Grade **D**

Clarity Grade **VVS 2**

Cut Grade **IDEAL**

ADDITIONAL GRADING INFORMATION

Polish **EXCELLENT**

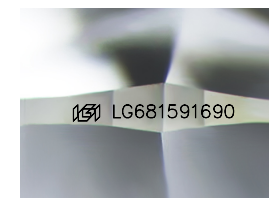
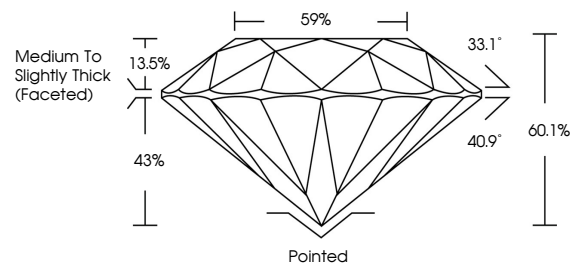
Symmetry **EXCELLENT**

Fluorescence **NONE**

Inscription(s) **LG681591690**

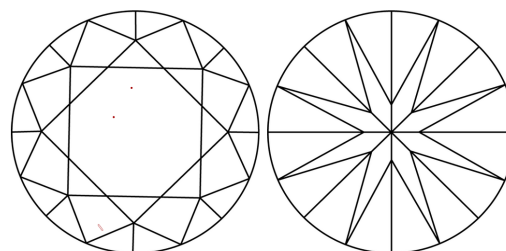
Comments: This Laboratory Grown Diamond was created by Chemical Vapor Deposition (CVD) growth process. Type IIa

PROPORTIONS



Sample Image Used

CLARITY CHARACTERISTICS



KEY TO SYMBOLS

Red symbols indicate internal characteristics.
Green symbols indicate external characteristics.

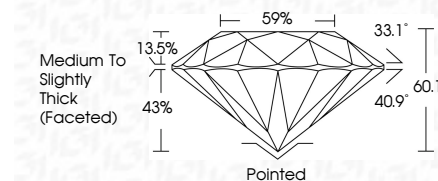
COLOR

D E F G H I J Faint Very Light Light

CLARITY

IF WS¹⁻² VS¹⁻² SI¹⁻² I¹⁻³

Internally Flawless Very Very Slightly Included Very Slightly Included Slightly Included Included



ADDITIONAL GRADING INFORMATION

Polish **EXCELLENT**

Symmetry **EXCELLENT**

Fluorescence **NONE**

Inscription(s) **LG681591690**

Comments: This Laboratory Grown Diamond was created by Chemical Vapor Deposition (CVD) growth process. Type IIa



IGI



February 11, 2025
IGI Report No LG681591690
ROUND BRILLIANT

11.80 - 11.87 X 7.11 MM

6.02 CARATS
D

Color Grade
VVS 2
IDEAL

Clarity Grade
VVS 2
IDEAL

Depth
60.1%

Table
59%

Grade
Medium To Slightly Thick (Faceted)

Culet
Pointed

Polish
EXCELLENT

Symmetry
EXCELLENT

Fluorescence
NONE

Inscriptions(s)
IGI LG681591690

Comments:
This Laboratory Grown Diamond was created by Chemical Vapor Deposition (CVD) growth process. Type IIa