



**ELECTRONIC COPY**

## LABORATORY GROWN DIAMOND REPORT

February 11, 2025	
IGI Report Number	LG681590443
Description	LABORATORY GROWN DIAMOND
Shape and Cutting Style	CUT CORNERED RECTANGULAR MODIFIED BRILLIANT
Measurements	8.90 X 6.35 X 4.25 MM

## GRADING RESULTS

Carat Weight	2.09 CARATS
Color Grade	E
Clarity Grade	VVS 2

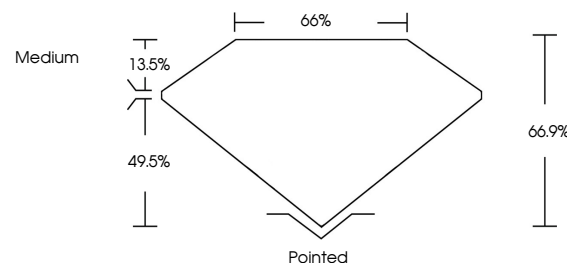
### ADDITIONAL GRADING INFORMATION

Polish	EXCELLENT
Symmetry	EXCELLENT
Fluorescence	NONE
Inscription(s)	15 LG681590443

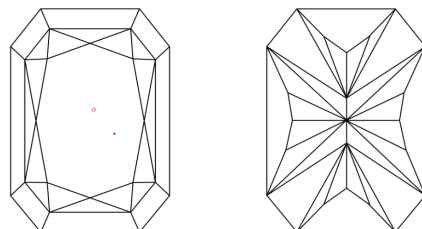
Comments: This Laboratory Grown Diamond was created by Chemical Vapor Deposition (CVD) growth process.  
Type IIa

LG681590443  
Report verification at [igi.org](https://igi.org)

## PROPORTIONS

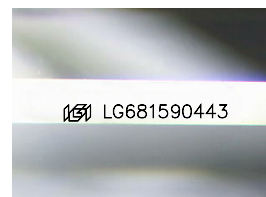


## CLARITY CHARACTERISTICS



## KEY TO SYMBOLS

Red symbols indicate internal characteristics.  
Green symbols indicate external characteristics.



Sample Image Used

COLOR

D E F G H I J Faint Very Light Light

## CLARITY

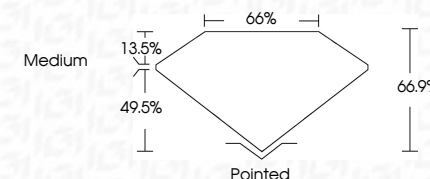
IF      VWS<sup>1-2</sup>      VS<sup>1-2</sup>      SI<sup>1-2</sup>      I<sup>1-3</sup>

Internally Flawless	Very Very Slightly Included	Very Slightly Included	Slightly Included	Included
------------------------	--------------------------------	---------------------------	----------------------	----------

## LABORATORY GROWN DIAMOND REPORT



February 11, 2025	
IGI Report Number	LG681590443
Description	LABORATORY GROWN DIAMOND
Shape and Cutting Style	CUT CORNERED RECTANGULAR MODIFIED BRILLIANT
Measurements	8.90 X 6.35 X 4.25 MM
<b>GRADING RESULTS</b>	
Carat Weight	2.09 CARATS
Color Grade	E
Clarity Grade	VVS 2



### ADDITIONAL GRADING INFORMATION

Polish	EXCELLENT
Symmetry	EXCELLENT
Fluorescence	NONE
Inscription(s)	 LG681590443
Comments: This Laboratory Grown Diamond was created by Chemical Vapor Deposition (CVD) growth process.	
Type IIa	



© IGI 2020, International Gemological Institute

FD - 10 20

**www.igi.org**

THIS DOCUMENT WAS PRODUCED WITH THE FOLLOWING SECURITY MEASURES: SPECIAL DOCUMENT PAPER, INK SCREENS, WATERMARK, BACKGROUND DESIGNS, HOLOGRAM AND OTHER SECURITY FEATURES NOT LISTED AND DO EXCEED DOCUMENT SECURITY INDUSTRY GUIDELINE

February 11, 2025	GI Report No LG681590443	2.09 CARATS	E
CU CORNERED RECT, MODIFIED BRILLIANT			
9.90 X 6.35 X 4.25 MM			
Color Weight	Clarity Grade	VVS 2	
Color Grade	Depth	66.9%	
	Table	65%	
	Girdle	Medium	
	Culet	Polished	
	Polish	EXCELLENT	
	Symmetry	EXCELLENT	
	Fluorescence	NONE	
			gem/G681590443

**Comments:**  
This Laboratory Grown Diamond was created by Chemical Vapor Deposition (CVD) growth process.