



**ELECTRONIC COPY**

LG681585252  
Report verification at igi.org



February 25, 2025  
IGI Report Number **LG681585252**  
Description **LABORATORY GROWN DIAMOND**  
Shape and Cutting Style **SQUARE CUSHION BRILLIANT**  
Measurements **5.56 X 5.57 X 3.75 MM**  
**GRADING RESULTS**  
Carat Weight **1.06 CARAT**  
Color Grade **FANCY LIGHT YELLOW**  
Clarity Grade **VS 1**

February 25, 2025  
IGI Report Number **LG681585252**  
Description **LABORATORY GROWN DIAMOND**  
Shape and Cutting Style **SQUARE CUSHION BRILLIANT**  
Measurements **5.56 X 5.57 X 3.75 MM**

**GRADING RESULTS**

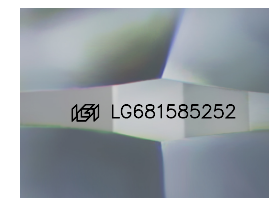
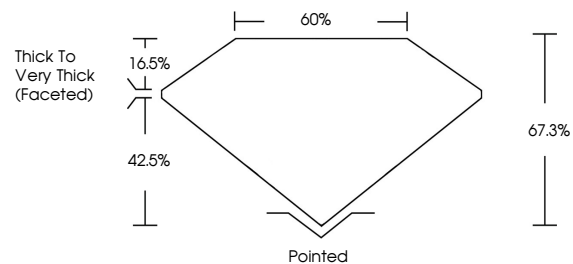
Carat Weight **1.06 CARAT**  
Color Grade **FANCY LIGHT YELLOW**  
Clarity Grade **VS 1**

**ADDITIONAL GRADING INFORMATION**

Polish **EXCELLENT**  
Symmetry **VERY GOOD**  
Fluorescence **NONE**  
Inscription(s) **LG681585252**

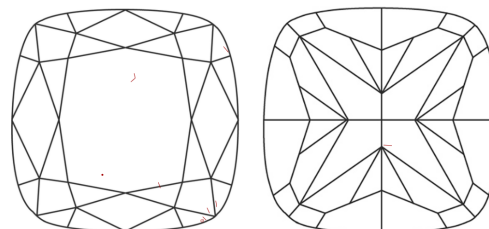
Comments: This Laboratory Grown Diamond was created by Chemical Vapor Deposition (CVD) growth process.

**PROPORTIONS**



Sample Image Used

**CLARITY CHARACTERISTICS**



**KEY TO SYMBOLS**

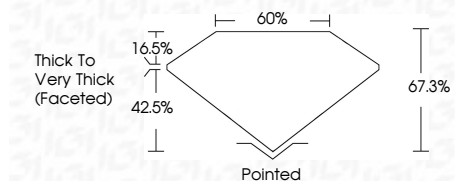
Red symbols indicate internal characteristics.  
Green symbols indicate external characteristics.

**COLOR**

D E F G H I J Faint Very Light Light

**CLARITY**

IF	VS <sup>1-2</sup>	VS <sup>1-2</sup>	SI <sup>1-2</sup>	I <sup>1-3</sup>
Internally Flawless	Very Very Slightly Included	Very Slightly Included	Slightly Included	Included



**ADDITIONAL GRADING INFORMATION**

Polish **EXCELLENT**  
Symmetry **VERY GOOD**  
Fluorescence **NONE**  
Inscription(s) **LG681585252**  
Comments: This Laboratory Grown Diamond was created by Chemical Vapor Deposition (CVD) growth process.



February 25, 2025  
IGI Report No **LG681585252**  
**SQUARE CUSHION BRILLIANT**  
Carat Weight **1.06 CARAT**  
Color Grade **FANCY LIGHT YELLOW**  
Clarity Grade **VS 1**  
Depth **67.3%**  
Table **60%**  
Girdle **Thick to Very Thick (Faceted)**  
Culet **Pointed**  
Polish **EXCELLENT**  
Symmetry **VERY GOOD**  
Fluorescence **NONE**  
Inscription(s) **LG681585252**

Comments: This Laboratory Grown Diamond was created by Chemical Vapor Deposition (CVD) growth process.