



ELECTRONIC COPY

LG681585231
Report verification at igi.org



February 25, 2025

IGI Report Number **LG681585231**

Description **LABORATORY GROWN DIAMOND**

Shape and Cutting Style **CUT CORNERED
RECTANGULAR MODIFIED
BRILLIANT**

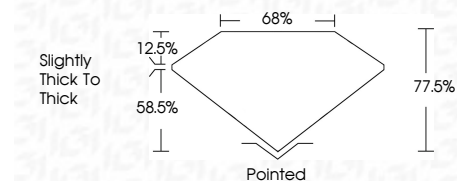
Measurements **8.66 X 5.95 X 4.61 MM**

GRADING RESULTS

Carat Weight **2.15 CARATS**

Color Grade **FANCY INTENSE YELLOW**

Clarity Grade **VVS 2**



ADDITIONAL GRADING INFORMATION

Polish **EXCELLENT**

Symmetry **EXCELLENT**

Fluorescence **NONE**

Inscription(s) **IGI LG681585231**

Comments: This Laboratory Grown Diamond was created by Chemical Vapor Deposition (CVD) growth process.



IGI

February 25, 2025
IGI Report No LG681585231
CUT CORNERED RECT. MODIFIED BRILLIANT
8.66 X 5.95 X 4.61 MM
2.15 CARATS
FANCY INTENSE YELLOW
VVS 2
77.05%
65%
Slightly thick to thick
Pointed
EXCELLENT
EXCELLENT
NONE
IGI LG681585231
Comments: This Laboratory Grown Diamond was created by Chemical Vapor Deposition (CVD) growth process.

LABORATORY GROWN DIAMOND REPORT

February 25, 2025

IGI Report Number **LG681585231**

Description **LABORATORY GROWN DIAMOND**

Shape and Cutting Style **CUT CORNERED RECTANGULAR
MODIFIED BRILLIANT**

Measurements **8.66 X 5.95 X 4.61 MM**

GRADING RESULTS

Carat Weight **2.15 CARATS**

Color Grade **FANCY INTENSE YELLOW**

Clarity Grade **VVS 2**

ADDITIONAL GRADING INFORMATION

Polish **EXCELLENT**

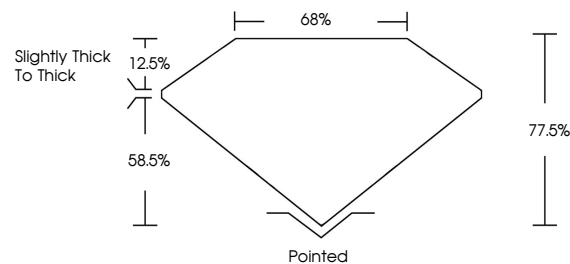
Symmetry **EXCELLENT**

Fluorescence **NONE**

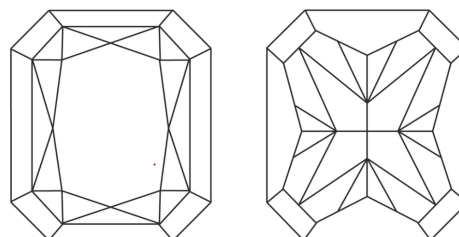
Inscription(s) **IGI LG681585231**

Comments: This Laboratory Grown Diamond was created by Chemical Vapor Deposition (CVD) growth process.

PROPORTIONS

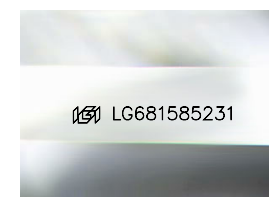


CLARITY CHARACTERISTICS



KEY TO SYMBOLS

Red symbols indicate internal characteristics.
Green symbols indicate external characteristics.



Sample Image Used

COLOR

D E F G H I J Faint Very Light Light

CLARITY

IF WS¹⁻² VS¹⁻² SI¹⁻² I¹⁻³

Internally Flawless Very Very Slightly Included Very Slightly Included Slightly Included Included

