



ELECTRONIC COPY

LG681581216
Report verification at igi.org



February 25, 2025

IGI Report Number **LG681581216**

Description **LABORATORY GROWN DIAMOND**

Shape and Cutting Style **ROUND BRILLIANT**

Measurements **7.94 - 7.96 X 4.82 MM**

GRADING RESULTS

Carat Weight **1.86 CARAT**

Color Grade **E**

Clarity Grade **VS 1**

Cut Grade **IDEAL**

February 25, 2025

IGI Report Number **LG681581216**

Description **LABORATORY GROWN DIAMOND**

Shape and Cutting Style **ROUND BRILLIANT**

Measurements **7.94 - 7.96 X 4.82 MM**

GRADING RESULTS

Carat Weight **1.86 CARAT**

Color Grade **E**

Clarity Grade **VS 1**

Cut Grade **IDEAL**

ADDITIONAL GRADING INFORMATION

Polish **EXCELLENT**

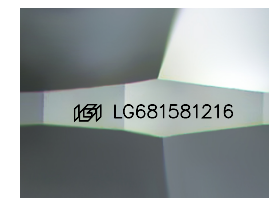
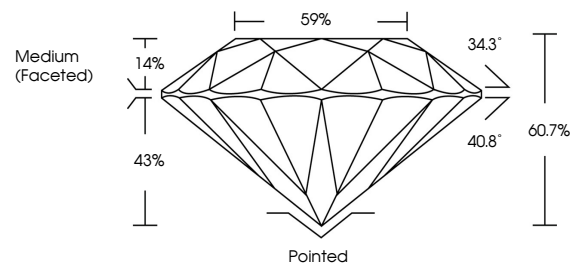
Symmetry **EXCELLENT**

Fluorescence **NONE**

Inscription(s) **LG681581216**

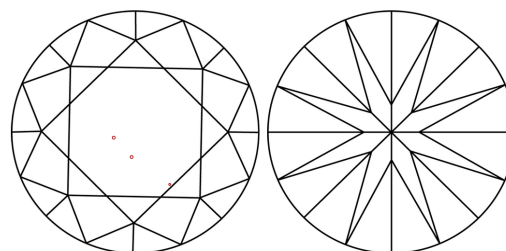
Comments: HEARTS & ARROWS
This Laboratory Grown Diamond was created by
Chemical Vapor Deposition (CVD) growth process.
Type IIa

PROPORTIONS



Sample Image Used

CLARITY CHARACTERISTICS



KEY TO SYMBOLS

Red symbols indicate internal characteristics.
Green symbols indicate external characteristics.



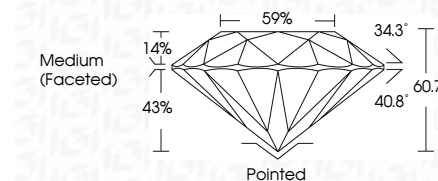
COLOR

D E F G H I J Faint Very Light Light

CLARITY

IF VS¹⁻² VS¹⁻² SI¹⁻² I¹⁻³

Internally Flawless Very Very Slightly Included Very Slightly Included Slightly Included Included



ADDITIONAL GRADING INFORMATION

Polish **EXCELLENT**

Symmetry **EXCELLENT**

Fluorescence **NONE**

Inscription(s) **LG681581216**

Comments: HEARTS & ARROWS
This Laboratory Grown Diamond was created by
Chemical Vapor Deposition (CVD) growth process.
Type IIa



IGI



February 25, 2025
IGI Report No LG681581216
ROUND BRILLIANT

7.94 - 7.96 X 4.82 MM

1.86 CARAT
E

VS 1
IDEAL
60.7%
59%

Medium (Faceted)

Pointed
EXCELLENT
EXCELLENT
NONE
NONE

IGI LG681581216

Comments:
Hearts & Arrows
This Laboratory Grown Diamond was
created by Chemical Vapor Deposition
(CVD) growth process.
Type IIa