



**ELECTRONIC COPY**

LG681581197  
Report verification at igi.org



February 24, 2025

IGI Report Number **LG681581197**

Description **LABORATORY GROWN DIAMOND**

Shape and Cutting Style **EMERALD CUT**

Measurements **11.70 X 7.82 X 5.27 MM**

**GRADING RESULTS**

Carat Weight **5.01 CARATS**

Color Grade **FANCY VIVID BLUE**

Clarity Grade **VS 2**

February 24, 2025  
IGI Report Number **LG681581197**  
Description **LABORATORY GROWN DIAMOND**  
Shape and Cutting Style **EMERALD CUT**  
Measurements **11.70 X 7.82 X 5.27 MM**

**GRADING RESULTS**

Carat Weight **5.01 CARATS**

Color Grade **FANCY VIVID BLUE**

Clarity Grade **VS 2**

**ADDITIONAL GRADING INFORMATION**

Polish **EXCELLENT**

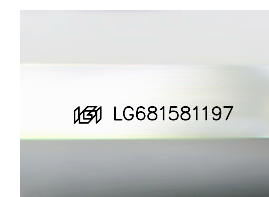
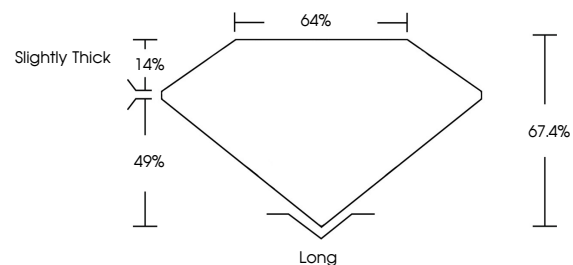
Symmetry **EXCELLENT**

Fluorescence **NONE**

Inscription(s) **LG681581197**

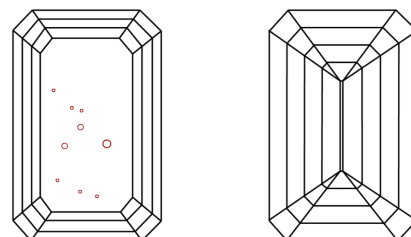
Comments: This Laboratory Grown Diamond was created by Chemical Vapor Deposition (CVD) growth process. Indications of post-growth treatment.

**PROPORTIONS**



Sample Image Used

**CLARITY CHARACTERISTICS**



**KEY TO SYMBOLS**

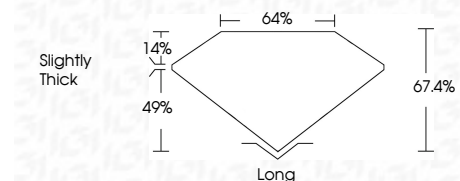
Red symbols indicate internal characteristics.  
Green symbols indicate external characteristics.

**COLOR**

D E F G H I J Faint Very Light Light

**CLARITY**

IF	VS <sup>1-2</sup>	VS <sup>1-2</sup>	SI <sup>1-2</sup>	I <sup>1-3</sup>
Internally Flawless	Very Very Slightly Included	Very Slightly Included	Slightly Included	Included



**ADDITIONAL GRADING INFORMATION**

Polish **EXCELLENT**

Symmetry **EXCELLENT**

Fluorescence **NONE**

Inscription(s) **LG681581197**

Comments: This Laboratory Grown Diamond was created by Chemical Vapor Deposition (CVD) growth process. Indications of post-growth treatment.



February 24, 2025  
IGI Report No. **LG681581197**  
**EMERALD CUT**

**5.01 CARATS**  
Carat Weight  
**FANCY VIVID BLUE**  
Color Grade

**VS 2**  
Clarity Grade  
**67.4%**  
Table  
**64%**  
Girdle  
Slightly Thick

**Long**  
Culet  
**EXCELLENT**  
Polish  
**EXCELLENT**  
Symmetry  
**NONE**  
Fluorescence  
**IGI LG681581197**  
Inscription(s)

Comments: This Laboratory Grown Diamond was created by Chemical Vapor Deposition (CVD) growth process. Indications of post-growth treatment.