



ELECTRONIC COPY

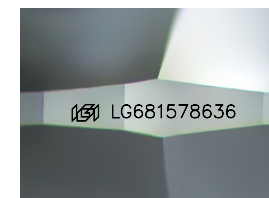
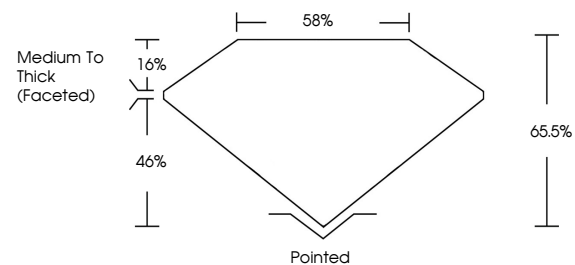
LG681578636
Report verification at igi.org



March 17, 2025
IGI Report Number **LG681578636**
Description **LABORATORY GROWN DIAMOND**
Shape and Cutting Style **CUSHION MODIFIED BRILLIANT**
Measurements **10.00 X 8.32 X 5.45 MM**
GRADING RESULTS
Carat Weight **3.59 CARATS**
Color Grade **D**
Clarity Grade **INTERNALLY FLAWLESS**

March 17, 2025
IGI Report Number **LG681578636**
Description **LABORATORY GROWN DIAMOND**
Shape and Cutting Style **CUSHION MODIFIED BRILLIANT**
Measurements **10.00 X 8.32 X 5.45 MM**

PROPORTIONS

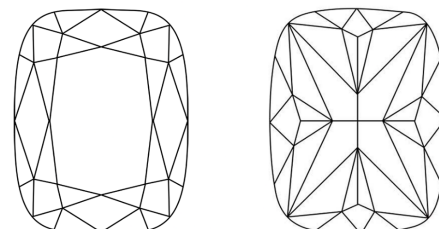


Sample Image Used

GRADING RESULTS

Carat Weight **3.59 CARATS**
Color Grade **D**
Clarity Grade **INTERNALLY FLAWLESS**

CLARITY CHARACTERISTICS



ADDITIONAL GRADING INFORMATION

Polish **EXCELLENT**
Symmetry **EXCELLENT**
Fluorescence **NONE**
Inscription(s) **IGI LG681578636**

Comments: As Grown - No indication of post-growth treatment.
This Laboratory Grown Diamond was created by High Pressure High Temperature (HPHT) growth process.
Type II

KEY TO SYMBOLS

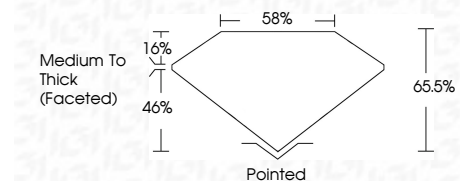
Red symbols indicate internal characteristics.
Green symbols indicate external characteristics.

COLOR

D E F G H I J Faint Very Light Light

CLARITY

IF	VS ¹⁻²	VS ¹⁻²	SI ¹⁻²	I ¹⁻³
Internally Flawless	Very Very Slightly Included	Very Slightly Included	Slightly Included	Included



ADDITIONAL GRADING INFORMATION

Polish **EXCELLENT**
Symmetry **EXCELLENT**
Fluorescence **NONE**
Inscription(s) **IGI LG681578636**
Comments: As Grown - No indication of post-growth treatment.
This Laboratory Grown Diamond was created by High Pressure High Temperature (HPHT) growth process.
Type II



IGI



March 17, 2025
IGI Report No LG681578636
CUSHION MODIFIED BRILLIANT
10.00 X 8.32 X 5.45 MM
3.59 CARATS
D
LF
65.5%
65%
Medium To Thick (Faceted)
Pointed
EXCELLENT
EXCELLENT
NONE
IGI LG681578636

Comments: As Grown - No indication of post-growth treatment.
This Laboratory Grown Diamond was created by High Pressure High Temperature (HPHT) growth process.
Type II