



**ELECTRONIC COPY**

LG681576893  
Report verification at igi.org



March 13, 2025  
IGI Report Number **LG681576893**  
Description **LABORATORY GROWN DIAMOND**  
Shape and Cutting Style **ROUND BRILLIANT**  
Measurements **7.19 - 7.25 X 4.29 MM**  
**GRADING RESULTS**  
Carat Weight **1.39 CARAT**  
Color Grade **FANCY INTENSE BLUE**  
Clarity Grade **VS 2**  
Cut Grade **EXCELLENT**

March 13, 2025  
IGI Report Number **LG681576893**  
Description **LABORATORY GROWN DIAMOND**  
Shape and Cutting Style **ROUND BRILLIANT**  
Measurements **7.19 - 7.25 X 4.29 MM**

**GRADING RESULTS**

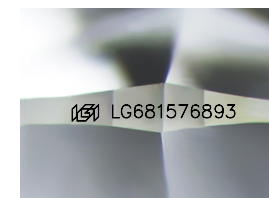
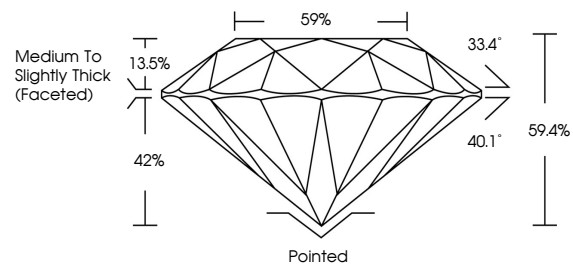
Carat Weight **1.39 CARAT**  
Color Grade **FANCY INTENSE BLUE**  
Clarity Grade **VS 2**  
Cut Grade **EXCELLENT**

**ADDITIONAL GRADING INFORMATION**

Polish **EXCELLENT**  
Symmetry **VERY GOOD**  
Fluorescence **NONE**  
Inscription(s) **LG681576893**

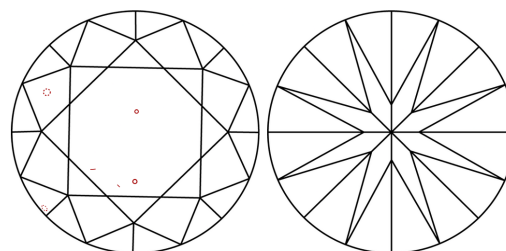
Comments: This Laboratory Grown Diamond was created by Chemical Vapor Deposition (CVD) growth process.  
Indications of post-growth treatment.

**PROPORTIONS**



Sample Image Used

**CLARITY CHARACTERISTICS**



**KEY TO SYMBOLS**

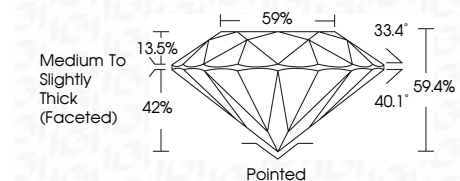
Red symbols indicate internal characteristics.  
Green symbols indicate external characteristics.

**COLOR**

D E F G H I J Faint Very Light Light

**CLARITY**

IF	VS <sup>1-2</sup>	VS <sup>1-2</sup>	SI <sup>1-2</sup>	I <sup>1-3</sup>
Internally Flawless	Very Very Slightly Included	Very Slightly Included	Slightly Included	Included



**ADDITIONAL GRADING INFORMATION**

Polish **EXCELLENT**  
Symmetry **VERY GOOD**  
Fluorescence **NONE**  
Inscription(s) **LG681576893**  
Comments: This Laboratory Grown Diamond was created by Chemical Vapor Deposition (CVD) growth process.  
Indications of post-growth treatment.



March 13, 2025  
IGI Report No LG681576893  
**ROUND BRILLIANT**  
1.39 CARAT  
FANCY INTENSE BLUE  
VS 2  
EXCELLENT  
59.4%  
42%  
33.4°  
40.1°  
59.4%  
Medium To Slightly Thick (Faceted)  
Pointed  
EXCELLENT  
VERY GOOD  
NONE  
NONE  
IGI LG681576893  
Comments: This Laboratory Grown Diamond was created by Chemical Vapor Deposition (CVD) growth process.  
Indications of post-growth treatment.