



ELECTRONIC COPY

LG681576259 Report verification at igi.org



March 8, 2025 IGI Report Number LG681576259 Description LABORATORY GROWN DIAMOND Shape and Cutting Style ROUND BRILLIANT Measurements 11.73 - 11.82 X 7.07 MM GRADING RESULTS Carat Weight 6.02 CARATS Color Grade G Clarity Grade VS 2 Cut Grade IDEAL

March 8, 2025 IGI Report Number LG681576259 Description LABORATORY GROWN DIAMOND Shape and Cutting Style ROUND BRILLIANT Measurements 11.73 - 11.82 X 7.07 MM

GRADING RESULTS

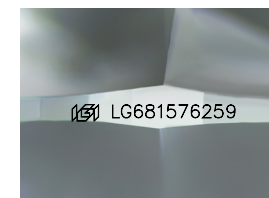
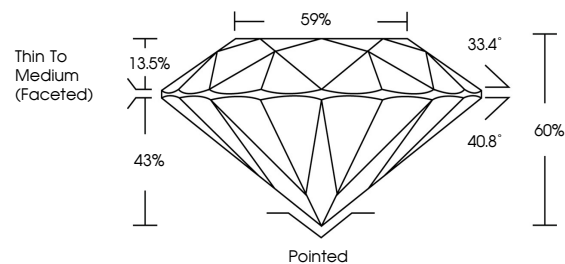
Carat Weight 6.02 CARATS Color Grade G Clarity Grade VS 2 Cut Grade IDEAL

ADDITIONAL GRADING INFORMATION

Polish EXCELLENT Symmetry EXCELLENT Fluorescence NONE Inscription(s) IGI LG681576259

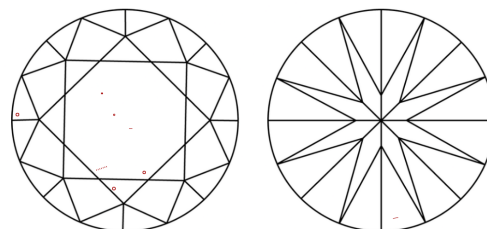
Comments: This Laboratory Grown Diamond was created by Chemical Vapor Deposition (CVD) growth process. Type IIa

PROPORTIONS



Sample Image Used

CLARITY CHARACTERISTICS



KEY TO SYMBOLS

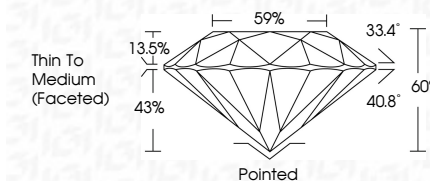
Red symbols indicate internal characteristics. Green symbols indicate external characteristics.

COLOR

D E F G H I J Faint Very Light Light

CLARITY

IF WS 1-2 VS 1-2 SI 1-2 I 1-3 Internally Flawless Very Very Slightly Included Very Slightly Included Slightly Included Included



ADDITIONAL GRADING INFORMATION

Polish EXCELLENT Symmetry EXCELLENT Fluorescence NONE Inscription(s) IGI LG681576259 Comments: This Laboratory Grown Diamond was created by Chemical Vapor Deposition (CVD) growth process. Type IIa



IGI



March 8, 2025 IGI Report No. LG681576259 ROUND BRILLIANT 11.73 - 11.82 X 7.07 MM 6.02 CARATS G VS 2 IDEAL 60% 59% Thin To Medium (Faceted) Pointed EXCELLENT EXCELLENT NONE NONE IGI LG681576259 Comments: This Laboratory Grown Diamond was created by Chemical Vapor Deposition (CVD) growth process. Type IIa