



**ELECTRONIC COPY**

LG681572992  
Report verification at igi.org



March 8, 2025  
IGI Report Number **LG681572992**  
Description **LABORATORY GROWN DIAMOND**  
Shape and Cutting Style **PRINCESS CUT**  
Measurements **10.93 X 10.61 X 7.55 MM**  
**GRADING RESULTS**  
Carat Weight **8.02 CARATS**  
Color Grade **FANCY PINK**  
Clarity Grade **VVS 2**

**LABORATORY GROWN DIAMOND REPORT**

March 8, 2025  
IGI Report Number **LG681572992**  
Description **LABORATORY GROWN DIAMOND**  
Shape and Cutting Style **PRINCESS CUT**  
Measurements **10.93 X 10.61 X 7.55 MM**

**GRADING RESULTS**

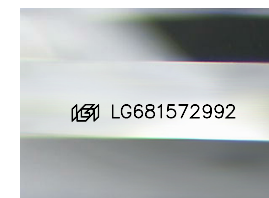
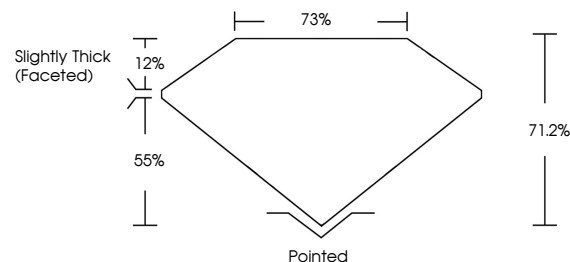
Carat Weight **8.02 CARATS**  
Color Grade **FANCY PINK**  
Clarity Grade **VVS 2**

**ADDITIONAL GRADING INFORMATION**

Polish **EXCELLENT**  
Symmetry **EXCELLENT**  
Fluorescence **SLIGHT**  
Inscription(s) **IGI LG681572992**

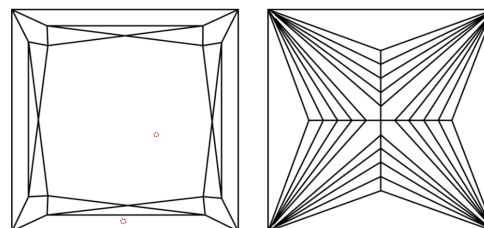
Comments: This Laboratory Grown Diamond was created by Chemical Vapor Deposition (CVD) growth process. Indications of post-growth treatment.

**PROPORTIONS**



Sample Image Used

**CLARITY CHARACTERISTICS**



**KEY TO SYMBOLS**

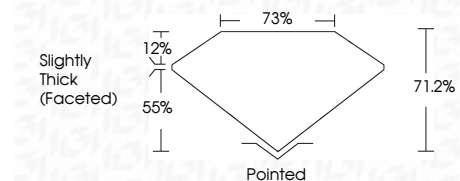
Red symbols indicate internal characteristics.  
Green symbols indicate external characteristics.

**COLOR**

D E F G H I J Faint Very Light Light

**CLARITY**

IF	VS <sup>1-2</sup>	VS <sup>1-2</sup>	SI <sup>1-2</sup>	I <sup>1-3</sup>
Internally Flawless	Very Very Slightly Included	Very Slightly Included	Slightly Included	Included



**ADDITIONAL GRADING INFORMATION**

Polish **EXCELLENT**  
Symmetry **EXCELLENT**  
Fluorescence **SLIGHT**  
Inscription(s) **IGI LG681572992**  
Comments: This Laboratory Grown Diamond was created by Chemical Vapor Deposition (CVD) growth process. Indications of post-growth treatment.



March 8, 2025  
IGI Report No. LG681572992  
**PRINCESS CUT**  
**8.02 CARATS**  
**FANCY PINK**  
Carat Weight  
Color Grade  
Clarity Grade  
Depth  
Table  
Girdle  
**Slightly Thick (Faceted)**  
Pointed  
**EXCELLENT**  
**EXCELLENT**  
**SLIGHT**  
IGI LG681572992  
Comments: This Laboratory Grown Diamond was created by Chemical Vapor Deposition (CVD) growth process. Indications of post-growth treatment.