



ELECTRONIC COPY

LG681571403
Report verification at igi.org



March 13, 2025

IGI Report Number **LG681571403**

Description **LABORATORY GROWN DIAMOND**

Shape and Cutting Style **ROUND BRILLIANT**

Measurements **11.09 - 11.16 X 6.63 MM**

GRADING RESULTS

Carat Weight **5.03 CARATS**

Color Grade **F**

Clarity Grade **VVS 2**

Cut Grade **IDEAL**

March 13, 2025
IGI Report Number **LG681571403**
Description **LABORATORY GROWN DIAMOND**
Shape and Cutting Style **ROUND BRILLIANT**
Measurements **11.09 - 11.16 X 6.63 MM**

GRADING RESULTS

Carat Weight **5.03 CARATS**

Color Grade **F**

Clarity Grade **VVS 2**

Cut Grade **IDEAL**

ADDITIONAL GRADING INFORMATION

Polish **EXCELLENT**

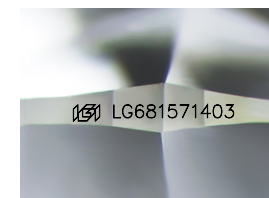
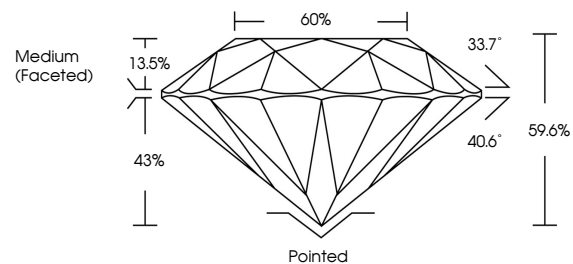
Symmetry **EXCELLENT**

Fluorescence **NONE**

Inscription(s) **IGI LG681571403**

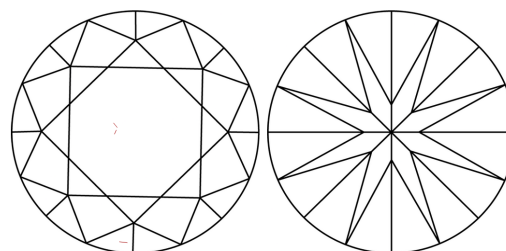
Comments: This Laboratory Grown Diamond was created by Chemical Vapor Deposition (CVD) growth process. Type IIa

PROPORTIONS



Sample Image Used

CLARITY CHARACTERISTICS



KEY TO SYMBOLS

Red symbols indicate internal characteristics.
Green symbols indicate external characteristics.

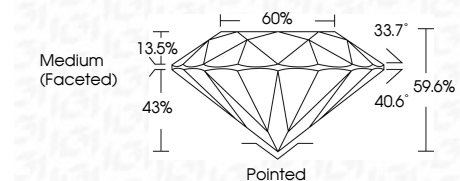
COLOR

D E F G H I J Faint Very Light Light

CLARITY

IF WS¹⁻² VS¹⁻² SI¹⁻² I¹⁻³

Internally Flawless Very Very Slightly Included Very Slightly Included Slightly Included Included



ADDITIONAL GRADING INFORMATION

Polish **EXCELLENT**

Symmetry **EXCELLENT**

Fluorescence **NONE**

Inscription(s) **IGI LG681571403**

Comments: This Laboratory Grown Diamond was created by Chemical Vapor Deposition (CVD) growth process. Type IIa



IGI



March 13, 2025	IGI Report No LG681571403	5.03 CARATS	F	VVS 2	IDEAL	59.6%	60%	Medium (Faceted)	Pointed	EXCELLENT	EXCELLENT	NONE	IGI LG681571403
IGI Report No LG681571403	ROUND BRILLIANT	11.09 - 11.16 X 6.63 MM	Color Grade	Clarity Grade	Cut Grade	Depth	Table	Girdle	Culet	Polish	Symmetry	Fluorescence	Inscription(s)

Comments: This Laboratory Grown Diamond was created by Chemical Vapor Deposition (CVD) growth process. Type IIa