



**ELECTRONIC COPY**

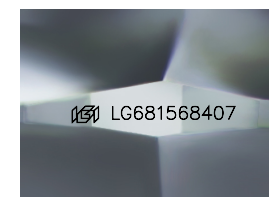
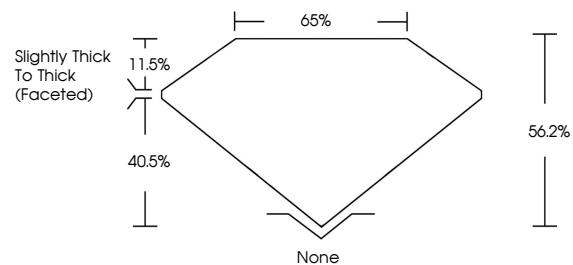
LG681568407  
Report verification at igi.org



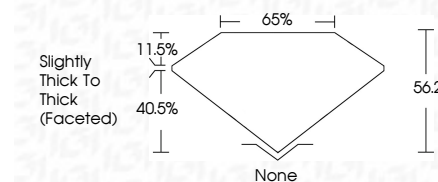
February 21, 2025  
IGI Report Number **LG681568407**  
Description **LABORATORY GROWN DIAMOND**  
Shape and Cutting Style **CUSHION BRILLIANT**  
Measurements **13.52 X 9.47 X 5.32 MM**  
**GRADING RESULTS**  
Carat Weight **5.53 CARATS**  
Color Grade **FANCY VIVID PINK**  
Clarity Grade **VS 2**

February 21, 2025  
IGI Report Number **LG681568407**  
Description **LABORATORY GROWN DIAMOND**  
Shape and Cutting Style **CUSHION BRILLIANT**  
Measurements **13.52 X 9.47 X 5.32 MM**  
**GRADING RESULTS**  
Carat Weight **5.53 CARATS**  
Color Grade **FANCY VIVID PINK**  
Clarity Grade **VS 2**

**PROPORTIONS**



Sample Image Used



**ADDITIONAL GRADING INFORMATION**

Polish **EXCELLENT**  
Symmetry **EXCELLENT**  
Fluorescence **SLIGHT**  
Inscription(s) **IGI LG681568407**

Comments: This Laboratory Grown Diamond was created by Chemical Vapor Deposition (CVD) growth process. Indications of post-growth treatment.

**COLOR**

D E F G H I J Faint Very Light Light

**CLARITY**

IF	VS <sup>1-2</sup>	VS <sup>1-2</sup>	SI <sup>1-2</sup>	I <sup>1-3</sup>
Internally Flawless	Very Very Slightly Included	Very Slightly Included	Slightly Included	Included

**ADDITIONAL GRADING INFORMATION**

Polish **EXCELLENT**  
Symmetry **EXCELLENT**  
Fluorescence **SLIGHT**  
Inscription(s) **IGI LG681568407**

Comments: This Laboratory Grown Diamond was created by Chemical Vapor Deposition (CVD) growth process. Indications of post-growth treatment.



**IGI**



February 21, 2025  
IGI Report No LG681568407  
**CUSHION BRILLIANT**  
13.52 X 9.47 X 5.32 MM  
5.53 CARATS  
FANCY VIVID PINK  
VS 2  
56.2%  
40.5%  
Slightly Thick To Thick (Faceted)  
None  
EXCELLENT  
EXCELLENT  
SLIGHT  
IGI LG681568407

Comments: This Laboratory Grown Diamond was created by Chemical Vapor Deposition (CVD) growth process. Indications of post-growth treatment.