



ELECTRONIC COPY

LABORATORY GROWN DIAMOND REPORT

February 20, 2025
IGI Report Number **LG681567898**
Description **LABORATORY GROWN DIAMOND**
Shape and Cutting Style **CUT CORNERED RECTANGULAR MODIFIED BRILLIANT**
Measurements **6.95 X 5.06 X 3.34 MM**

GRADING RESULTS

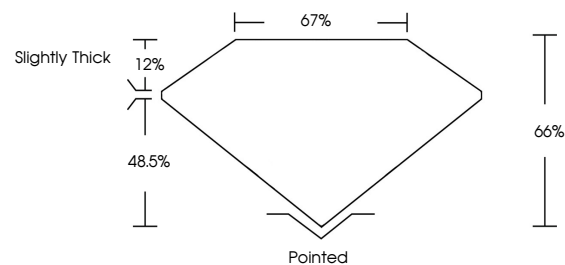
Carat Weight **1.17 CARAT**
Color Grade **FANCY VIVID YELLOW**
Clarity Grade **SI 1**

ADDITIONAL GRADING INFORMATION

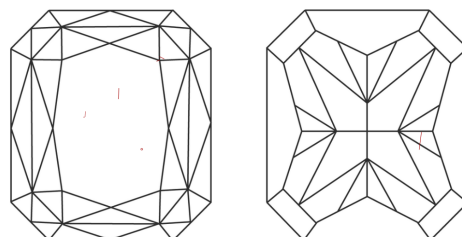
Polish **EXCELLENT**
Symmetry **EXCELLENT**
Fluorescence **NONE**
Inscription(s) **IGI LG681567898**

Comments: This Laboratory Grown Diamond was created by Chemical Vapor Deposition (CVD) growth process.

PROPORTIONS

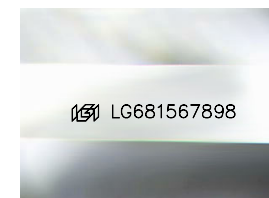


CLARITY CHARACTERISTICS



KEY TO SYMBOLS

Red symbols indicate internal characteristics.
Green symbols indicate external characteristics.



Sample Image Used

COLOR

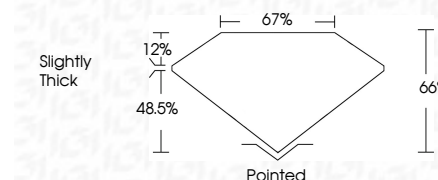
D E F G H I J Faint Very Light Light

CLARITY

IF WS¹⁻² VS¹⁻² SI¹⁻² I¹⁻³
Internally Flawless Very Very Slightly Included Very Slightly Included Slightly Included Included



February 20, 2025
IGI Report Number **LG681567898**
Description **LABORATORY GROWN DIAMOND**
Shape and Cutting Style **CUT CORNERED RECTANGULAR MODIFIED BRILLIANT**
Measurements **6.95 X 5.06 X 3.34 MM**
GRADING RESULTS
Carat Weight **1.17 CARAT**
Color Grade **FANCY VIVID YELLOW**
Clarity Grade **SI 1**



ADDITIONAL GRADING INFORMATION

Polish **EXCELLENT**
Symmetry **EXCELLENT**
Fluorescence **NONE**
Inscription(s) **IGI LG681567898**
Comments: This Laboratory Grown Diamond was created by Chemical Vapor Deposition (CVD) growth process.



February 20, 2025
IGI Report No **LG681567898**
CUT CORNERED RECT. MODIFIED BRILLIANT
6.95 X 5.06 X 3.34 MM
Carat Weight **1.17 CARAT**
Color Grade **FANCY VIVID YELLOW**
Clarity Grade **SI 1**
Depth **66%**
Table **67%**
Girdle **Slightly Thick**
Culet **Pointed**
Polish **EXCELLENT**
Symmetry **EXCELLENT**
Fluorescence **NONE**
Inscription(s) **IGI LG681567898**

Comments: This Laboratory Grown Diamond was created by Chemical Vapor Deposition (CVD) growth process.