



ELECTRONIC COPY

LG681558821
Report verification at igi.org



February 19, 2025

IGI Report Number **LG681558821**

Description **LABORATORY GROWN DIAMOND**

Shape and Cutting Style **CUT CORNERED
RECTANGULAR MODIFIED
BRILLIANT**

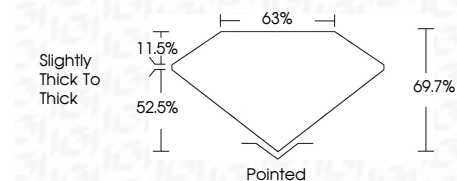
Measurements **11.03 X 7.57 X 5.28 MM**

GRADING RESULTS

Carat Weight **4.03 CARATS**

Color Grade **FANCY INTENSE YELLOW**

Clarity Grade **VVS 2**



ADDITIONAL GRADING INFORMATION

Polish **EXCELLENT**

Symmetry **EXCELLENT**

Fluorescence **NONE**

Inscription(s) **IGI LG681558821**

Comments: This Laboratory Grown Diamond was created by Chemical Vapor Deposition (CVD) growth process.



February 19, 2025	IGI Report No LG681558821	CUT CORNERED RECT. MODIFIED BRILLIANT
11.03 X 7.57 X 5.28 MM	4.03 CARATS	FANCY INTENSE YELLOW
VVS 2	69.7%	63%
Slightly thick to thick	Pointed	EXCELLENT
EXCELLENT	EXCELLENT	NONE
IGI LG681558821		

Comments: This Laboratory Grown Diamond was created by Chemical Vapor Deposition (CVD) growth process.

LABORATORY GROWN DIAMOND REPORT

February 19, 2025

IGI Report Number **LG681558821**

Description **LABORATORY GROWN DIAMOND**

Shape and Cutting Style **CUT CORNERED RECTANGULAR
MODIFIED BRILLIANT**

Measurements **11.03 X 7.57 X 5.28 MM**

GRADING RESULTS

Carat Weight **4.03 CARATS**

Color Grade **FANCY INTENSE YELLOW**

Clarity Grade **VVS 2**

ADDITIONAL GRADING INFORMATION

Polish **EXCELLENT**

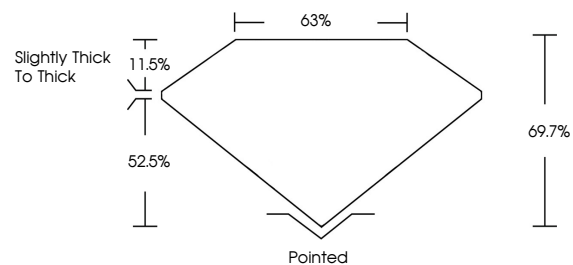
Symmetry **EXCELLENT**

Fluorescence **NONE**

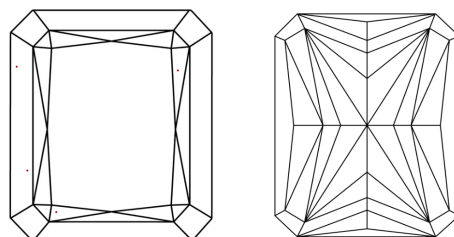
Inscription(s) **IGI LG681558821**

Comments: This Laboratory Grown Diamond was created by Chemical Vapor Deposition (CVD) growth process.

PROPORTIONS

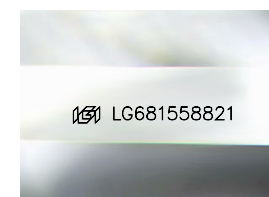


CLARITY CHARACTERISTICS



KEY TO SYMBOLS

Red symbols indicate internal characteristics.
Green symbols indicate external characteristics.



Sample Image Used

COLOR

D E F G H I J Faint Very Light Light

CLARITY

IF WS¹⁻² VS¹⁻² SI¹⁻² I¹⁻³

Internally Flawless Very Very Slightly Included Very Slightly Included Slightly Included Included

