



ELECTRONIC COPY

LABORATORY GROWN DIAMOND REPORT

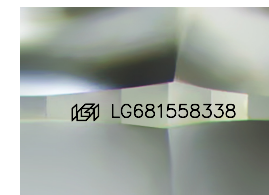
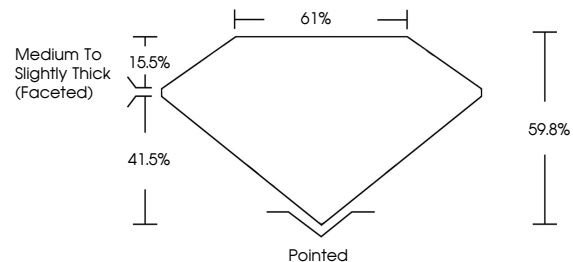
February 8, 2025
IGI Report Number **LG681558338**
Description **LABORATORY GROWN DIAMOND**
Shape and Cutting Style **SHIELD CUT**
Measurements **10.17 X 9.47 X 5.66 MM**
GRADING RESULTS
Carat Weight **3.44 CARATS**
Color Grade **G**
Clarity Grade **VS 1**

ADDITIONAL GRADING INFORMATION

Polish **EXCELLENT**
Symmetry **EXCELLENT**
Fluorescence **NONE**
Inscription(s) **IGI LG681558338**

Comments: This Laboratory Grown Diamond was created by Chemical Vapor Deposition (CVD) growth process.
Type IIa

PROPORTIONS



Sample Image Used

COLOR

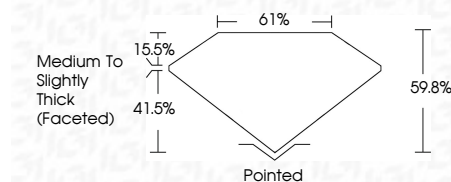
D E F G H I J Faint Very Light Light

CLARITY

IF	VS ¹⁻²	VS ¹⁻²	SI ¹⁻²	I ¹⁻³
Internally Flawless	Very Very Slightly Included	Very Slightly Included	Slightly Included	Included



February 8, 2025
IGI Report Number **LG681558338**
Description **LABORATORY GROWN DIAMOND**
Shape and Cutting Style **SHIELD CUT**
Measurements **10.17 X 9.47 X 5.66 MM**
GRADING RESULTS
Carat Weight **3.44 CARATS**
Color Grade **G**
Clarity Grade **VS 1**



ADDITIONAL GRADING INFORMATION

Polish **EXCELLENT**
Symmetry **EXCELLENT**
Fluorescence **NONE**
Inscription(s) **IGI LG681558338**
Comments: This Laboratory Grown Diamond was created by Chemical Vapor Deposition (CVD) growth process.
Type IIa



February 8, 2025
IGI Report No. LG681558338
SHIELD CUT
10.17 X 9.47 X 5.66 MM
3.44 CARATS
G
VS 1
61%
61%
Medium to Slightly Thick (Faceted)
Pointed
EXCELLENT
EXCELLENT
NONE
IGI LG681558338
Comments: This Laboratory Grown Diamond was created by Chemical Vapor Deposition (CVD) growth process.
Type IIa