



**ELECTRONIC COPY**

LG681518293  
Report verification at igi.org



February 27, 2025  
IGI Report Number **LG681518293**  
Description **LABORATORY GROWN DIAMOND**  
Shape and Cutting Style **CUSHION MODIFIED BRILLIANT**  
Measurements **7.81 X 6.52 X 4.40 MM**  
**GRADING RESULTS**  
Carat Weight **2.07 CARATS**  
Color Grade **FANCY INTENSE YELLOW**  
Clarity Grade **VS 1**

February 27, 2025  
IGI Report Number **LG681518293**  
Description **LABORATORY GROWN DIAMOND**  
Shape and Cutting Style **CUSHION MODIFIED BRILLIANT**  
Measurements **7.81 X 6.52 X 4.40 MM**

**GRADING RESULTS**

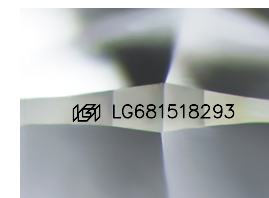
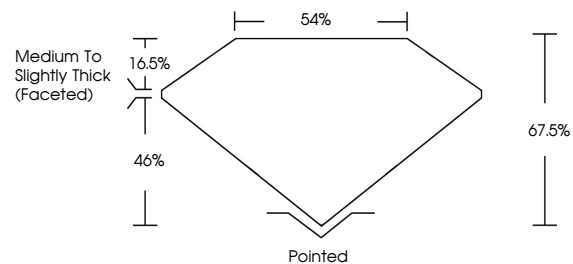
Carat Weight **2.07 CARATS**  
Color Grade **FANCY INTENSE YELLOW**  
Clarity Grade **VS 1**

**ADDITIONAL GRADING INFORMATION**

Polish **EXCELLENT**  
Symmetry **VERY GOOD**  
Fluorescence **NONE**  
Inscription(s) **LG681518293**

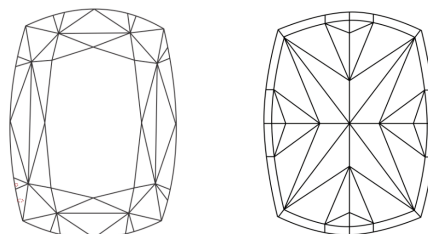
Comments: This Laboratory Grown Diamond was created by Chemical Vapor Deposition (CVD) growth process.

**PROPORTIONS**



Sample Image Used

**CLARITY CHARACTERISTICS**



**KEY TO SYMBOLS**

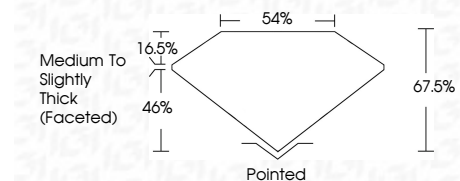
Red symbols indicate internal characteristics.  
Green symbols indicate external characteristics.

**COLOR**

D E F G H I J Faint Very Light Light

**CLARITY**

IF	VS <sup>1-2</sup>	VS <sup>1-2</sup>	SI <sup>1-2</sup>	I <sup>1-3</sup>
Internally Flawless	Very Very Slightly Included	Very Slightly Included	Slightly Included	Included



**ADDITIONAL GRADING INFORMATION**

Polish **EXCELLENT**  
Symmetry **VERY GOOD**  
Fluorescence **NONE**  
Inscription(s) **LG681518293**  
Comments: This Laboratory Grown Diamond was created by Chemical Vapor Deposition (CVD) growth process.



February 27, 2025  
IGI Report No LG681518293  
**CUSHION MODIFIED BRILLIANT**  
7.81 X 6.52 X 4.40 MM  
2.07 CARATS  
FANCY INTENSE YELLOW  
VS 1  
67.5%  
46%  
16.5%  
Medium to Slightly Thick (Faceted)  
Pointed  
EXCELLENT  
VERY GOOD  
NONE  
IGI LG681518293

Comments: This Laboratory Grown Diamond was created by Chemical Vapor Deposition (CVD) growth process.