



ELECTRONIC COPY

LG681518237
Report verification at igi.org



February 18, 2025

IGI Report Number **LG681518237**

Description **LABORATORY GROWN DIAMOND**

Shape and Cutting Style **PEAR MODIFIED BRILLIANT**

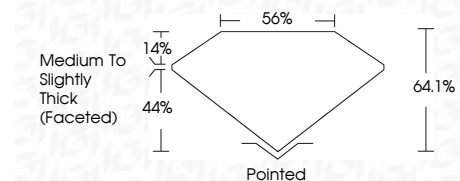
Measurements **9.06 X 5.60 X 3.59 MM**

GRADING RESULTS

Carat Weight **1.29 CARAT**

Color Grade **FANCY VIVID YELLOW**

Clarity Grade **VS 1**



ADDITIONAL GRADING INFORMATION

Polish **EXCELLENT**

Symmetry **EXCELLENT**

Fluorescence **NONE**

Inscription(s) **IGI LG681518237**

Comments: This Laboratory Grown Diamond was created by Chemical Vapor Deposition (CVD) growth process.

Secondary color: Brown



| | | | | | | | | | | | | | | |
|-------------------|-------------------------------------|-------------------------|-----------------------|------------|--------------------|------|-------|-----|------------------------------------|---------|-----------|-----------|------|-----------------|
| February 18, 2025 | IGI Report No LG681518237 | PEAR MODIFIED BRILLIANT | 9.06 X 5.60 X 3.59 MM | 1.29 CARAT | FANCY VIVID YELLOW | VS 1 | 64.1% | 85% | Medium to Slightly Thick (Faceted) | Pointed | EXCELLENT | EXCELLENT | NONE | IGI LG681518237 |
| IGI | INTERNATIONAL GEMOLOGICAL INSTITUTE | 1975 | | | | | | | | | | | | |

Comments: This Laboratory Grown Diamond was created by Chemical Vapor Deposition (CVD) growth process. Secondary color: Brown

February 18, 2025
IGI Report Number **LG681518237**
Description **LABORATORY GROWN DIAMOND**
Shape and Cutting Style **PEAR MODIFIED BRILLIANT**
Measurements **9.06 X 5.60 X 3.59 MM**

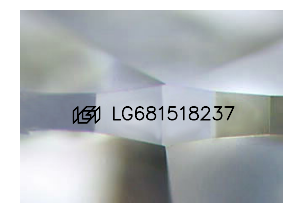
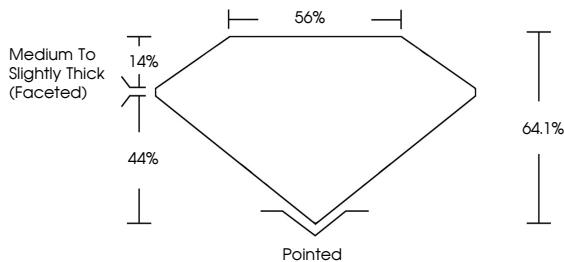
GRADING RESULTS
Carat Weight **1.29 CARAT**
Color Grade **FANCY VIVID YELLOW**
Clarity Grade **VS 1**

ADDITIONAL GRADING INFORMATION
Polish **EXCELLENT**
Symmetry **EXCELLENT**
Fluorescence **NONE**
Inscription(s) **IGI LG681518237**

Comments: This Laboratory Grown Diamond was created by Chemical Vapor Deposition (CVD) growth process.

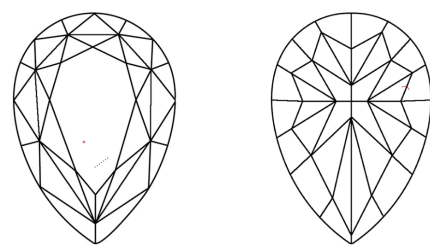
Secondary color: Brown

PROPORTIONS



Sample Image Used

CLARITY CHARACTERISTICS



KEY TO SYMBOLS

Red symbols indicate internal characteristics.
Green symbols indicate external characteristics.

COLOR

| | | | | | | | | | |
|---|---|---|---|---|---|---|-------|------------|-------|
| D | E | F | G | H | I | J | Faint | Very Light | Light |
|---|---|---|---|---|---|---|-------|------------|-------|

CLARITY

| | | | | |
|---------------------|-----------------------------|------------------------|-------------------|------------------|
| IF | VS ¹⁻² | VS ¹⁻² | SI ¹⁻² | I ¹⁻³ |
| Internally Flawless | Very Very Slightly Included | Very Slightly Included | Slightly Included | Included |

