



ELECTRONIC COPY

LABORATORY GROWN DIAMOND REPORT

February 13, 2025	
IGI Report Number	LG681513251
Description	LABORATORY GROWN DIAMOND
Shape and Cutting Style	CUSHION MODIFIED BRILLIANT
Measurements	6.32 X 5.19 X 3.30 MM

GRADING RESULTS

Carat Weight	1.01 CARAT
Color Grade	FANCY INTENSE YELLOW
Clarity Grade	VS 1

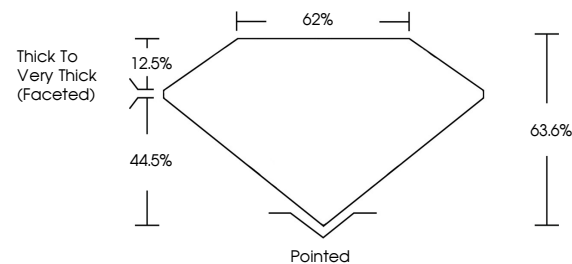
ADDITIONAL GRADING INFORMATION

Polish	EXCELLENT
Symmetry	EXCELLENT
Fluorescence	NONE
Inscription(s)	 LG681513251

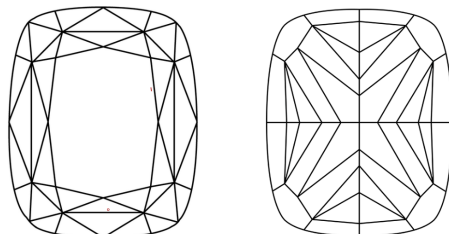
Comments: This Laboratory Grown Diamond was created by Chemical Vapor Deposition (CVD) growth process.

LG681513251
Report verification at igi.org

PROPORTIONS

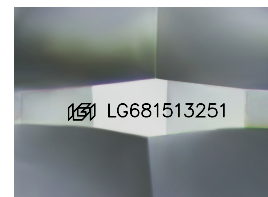


CLARITY CHARACTERISTICS



KEY TO SYMBOLS

Red symbols indicate internal characteristics.
Green symbols indicate external characteristics.



Sample Image Used

COLOR

D E F G H I J Faint Very Light Light

CLARITY

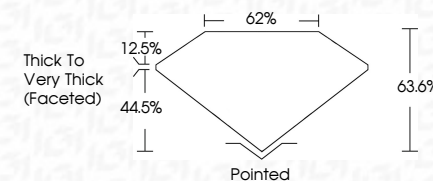
IF WS¹⁻² VS¹⁻² SI¹⁻² 1-3

Internally Flawless	Very Very Slightly Included	Very Slightly Included	Slightly Included	Included
------------------------	--------------------------------	---------------------------	----------------------	----------

LABORATORY GROWN DIAMOND REPORT



February 13, 2025	
IGI Report Number	LG681513251
Description	LABORATORY GROWN DIAMOND
Shape and Cutting Style	CUSHION MODIFIED BRILLIANT
Measurements	6.32 X 5.19 X 3.30 MM
GRADING RESULTS	
Carat Weight	1.01 CARAT
Color Grade	FANCY INTENSE YELLOW
Clarity Grade	VS 1



ADDITIONAL GRADING INFORMATION

Polish	EXCELLENT
Symmetry	EXCELLENT
Fluorescence	NONE
Inscription(s)	157 LG681513251

Comments: This Laboratory Grown Diamond was created by Chemical Vapor Deposition (CVD) growth process.



© IGI 2020, International Gemological Institute

FD - 10 20



THIS DOCUMENT WAS PRODUCED WITH THE FOLLOWING SECURITY MEASURES: SPECIAL DOCUMENT PAPER, INK SCREENS, WATERMARK, BACKGROUND DESIGNS, HOLOGRAM AND OTHER SECURITY FEATURES NOT LISTED AND DO EXCEED DOCUMENT SECURITY INDUSTRY GUIDELINES

[illegible]

Comments:
This Laboratory Grown Diamond was
created by Chemical Vapor Deposition



www.igi.org