



ELECTRONIC COPY

LG680579861
Report verification at igi.org



February 21, 2025

IGI Report Number **LG680579861**

Description **LABORATORY GROWN DIAMOND**

Shape and Cutting Style **CUT CORNERED
RECTANGULAR MODIFIED
BRILLIANT**

Measurements **11.09 X 7.93 X 5.44 MM**

GRADING RESULTS

Carat Weight **4.69 CARATS**

Color Grade **FANCY VIVID YELLOW**

Clarity Grade **VS 1**

February 21, 2025

IGI Report Number **LG680579861**

Description **LABORATORY GROWN DIAMOND**

Shape and Cutting Style **CUT CORNERED RECTANGULAR
MODIFIED BRILLIANT**

Measurements **11.09 X 7.93 X 5.44 MM**

GRADING RESULTS

Carat Weight **4.69 CARATS**

Color Grade **FANCY VIVID YELLOW**

Clarity Grade **VS 1**

ADDITIONAL GRADING INFORMATION

Polish **EXCELLENT**

Symmetry **EXCELLENT**

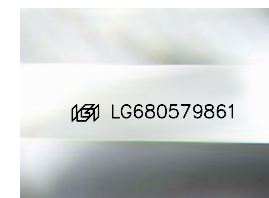
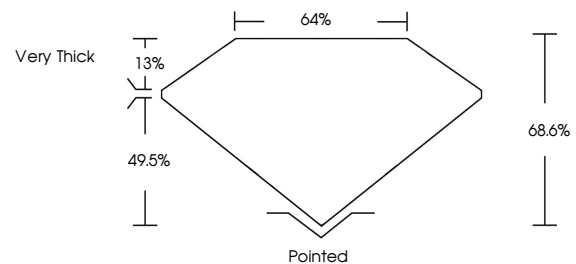
Fluorescence **NONE**

Inscription(s) **IGI LG680579861**

Comments: This Laboratory Grown Diamond was created by Chemical Vapor Deposition (CVD) growth process.

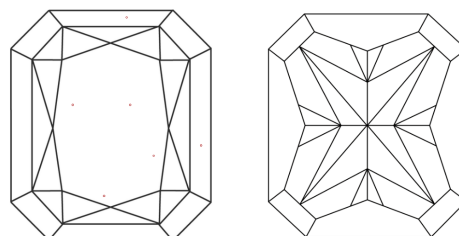
Secondary color: Grey

PROPORTIONS



Sample Image Used

CLARITY CHARACTERISTICS



KEY TO SYMBOLS

Red symbols indicate internal characteristics.
Green symbols indicate external characteristics.

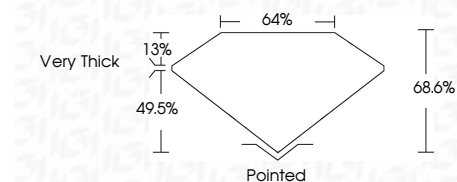
COLOR

D E F G H I J Faint Very Light Light

CLARITY

IF VS¹⁻² VS¹⁻² SI¹⁻² I¹⁻³

Internally Flawless Very Very Slightly Included Very Slightly Included Slightly Included Included



ADDITIONAL GRADING INFORMATION

Polish **EXCELLENT**

Symmetry **EXCELLENT**

Fluorescence **NONE**

Inscription(s) **IGI LG680579861**

Comments: This Laboratory Grown Diamond was created by Chemical Vapor Deposition (CVD) growth process.

Secondary color: Grey



IGI



February 21, 2025
IGI Report No LG680579861
CUT CORNERED RECT. MODIFIED BRILLIANT
4.69 CARATS
Carat Weight
Color Grade FANCY VIVID YELLOW
Clarity Grade VS 1
Depth 49.5%
Table 13%
Girdle Very Thick
Culet Pointed
Polish EXCELLENT
Symmetry EXCELLENT
Fluorescence NONE
Inscription(s) IGI LG680579861
Comments: This Laboratory Grown Diamond was created by Chemical Vapor Deposition (CVD) growth process.
Secondary color: Grey