



**INTERNATIONAL  
GEMOLOGICAL  
INSTITUTE**

**ELECTRONIC COPY**

## LABORATORY GROWN DIAMOND REPORT

February 26, 2025	
IGI Report Number	LG680567365
Description	LABORATORY GROWN DIAMOND
Shape and Cutting Style	PRINCESS CUT
Measurements	7.79 X 7.73 X 5.30 MM

## GRADING RESULTS

Carat Weight	2.89 CARATS
Color Grade	F
Clarity Grade	VS 2

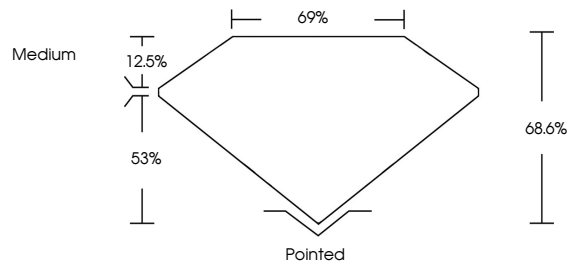
### ADDITIONAL GRADING INFORMATION

Polish	EXCELLENT
Symmetry	EXCELLENT
Fluorescence	NONE
Inscription(s)	 LG680567365

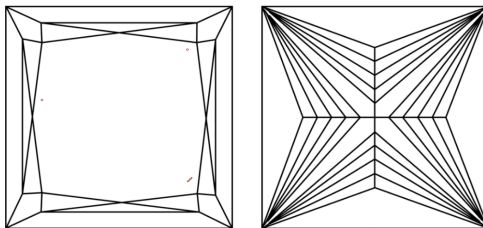
Comments: This Laboratory Grown Diamond was created by Chemical Vapor Deposition (CVD) growth process.  
Type IIa

LG680567365  
Report verification at [igi.org](https://igi.org)

## PROPORTIONS

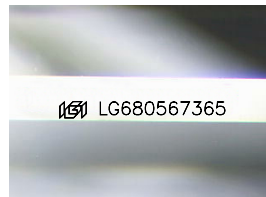


## CLARITY CHARACTERISTICS



## KEY TO SYMBOLS

Red symbols indicate internal characteristics.  
Green symbols indicate external characteristics.



Sample Image Used

**COLOR**

D E F G H I J      Faint      Very Light      Light

## CLARITY

IF      WS<sup>1-2</sup>      VS<sup>1-2</sup>      SI<sup>1-2</sup>      I<sup>1-3</sup>

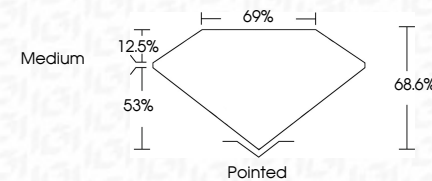
Internally Flawless	Very Very Slightly Included	Very Slightly Included	Slightly Included	Included
------------------------	--------------------------------	---------------------------	----------------------	----------



February 26, 2025	
IGI Report Number	LG680567365
Description	LABORATORY GROWN DIAMOND
Shape and Cutting Style	PRINCESS CUT
Measurements	7.79 X 7.73 X 5.30 MM

## GRADING RESULTS

Carat Weight	2.89 CARATS
Color Grade	F
Clarity Grade	VS 2



### ADDITIONAL GRADING INFORMATION

Polish	EXCELLENT
Symmetry	EXCELLENT
Fluorescence	NONE
Inscription(s)	<del>LG</del> LG680567365

Comments: This Laboratory Grown Diamond was created by Chemical Vapor Deposition (CVD) growth process.

Type IIa



IG

February 26, 2025 IGI Report No LG49057365 Processing CUT	<div style="background-color: #f0f0f0; padding: 5px; margin-bottom: 10px;"> <b>7.79 X 7.73 X 5.30 MM</b>            Carat Weight            Color Grade            Clarity Grade            Depth            Table            Grade         </div> <div style="background-color: #f0f0f0; padding: 5px;">           Cushion            Shape            Flashed            Facet            Count            Girdle            Width            Thickness            Length            Width            Height            Diameter            Weight            Volume            Density            Refractive Index            Birefringence            Optical Character            Optic Axis            Optic Sign            Dispersion            Fluorescence            Inclusions            Comments:            This Laboratory Grown Diamond            was created by Chemical Vapor            Deposition (CVD) growth process.            Type IIa         </div>	(89)
---	---	------

**Comments:**  
This Laboratory Grown Diamond was created by Chemical Vapor Deposition (CVD) growth process.

**www.igi.org**

© IGI 2020, International Gemological Institute

FD - 10 20



THIS DOCUMENT WAS PRODUCED WITH THE FOLLOWING SECURITY MEASURES: SPECIAL DOCUMENT PAPER, INK SCREENS, WATERMARK BACKGROUND DESIGNS, HOLOGRAM AND OTHER SECURITY FEATURES NOT LISTED AND DO EXCEED DOCUMENT SECURITY INDUSTRY GUIDELINES