



**ELECTRONIC COPY**

LG680560627  
Report verification at igi.org



February 13, 2025

IGI Report Number **LG680560627**

Description **LABORATORY GROWN DIAMOND**

Shape and Cutting Style **PRINCESS CUT**

Measurements **10.13 X 10.11 X 6.81 MM**

**GRADING RESULTS**

Carat Weight **6.53 CARATS**

Color Grade **E**

Clarity Grade **VS 1**

February 13, 2025  
IGI Report Number **LG680560627**  
Description **LABORATORY GROWN DIAMOND**  
Shape and Cutting Style **PRINCESS CUT**  
Measurements **10.13 X 10.11 X 6.81 MM**

**GRADING RESULTS**

Carat Weight **6.53 CARATS**

Color Grade **E**

Clarity Grade **VS 1**

**ADDITIONAL GRADING INFORMATION**

Polish **EXCELLENT**

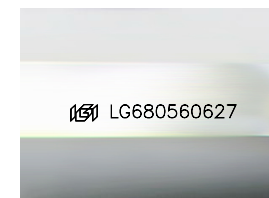
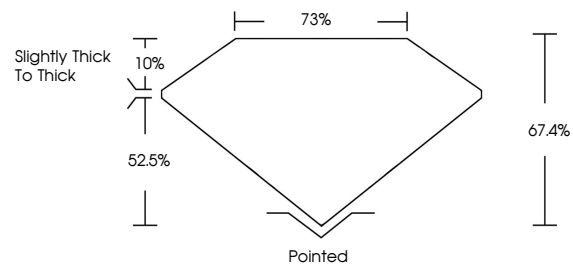
Symmetry **EXCELLENT**

Fluorescence **NONE**

Inscription(s) **IGI LG680560627**

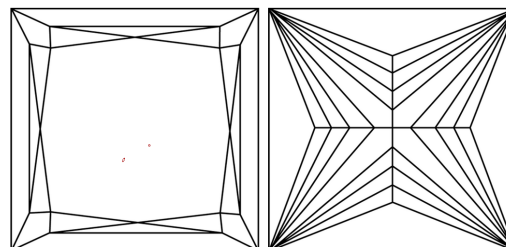
Comments: This Laboratory Grown Diamond was created by Chemical Vapor Deposition (CVD) growth process. Type IIa

**PROPORTIONS**



Sample Image Used

**CLARITY CHARACTERISTICS**



**KEY TO SYMBOLS**

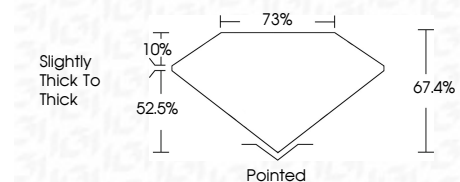
Red symbols indicate internal characteristics.  
Green symbols indicate external characteristics.

**COLOR**

D E F G H I J Faint Very Light Light

**CLARITY**

IF	VS <sup>1-2</sup>	VS <sup>1-2</sup>	SI <sup>1-2</sup>	I <sup>1-3</sup>
Internally Flawless	Very Very Slightly Included	Very Slightly Included	Slightly Included	Included



**ADDITIONAL GRADING INFORMATION**

Polish **EXCELLENT**

Symmetry **EXCELLENT**

Fluorescence **NONE**

Inscription(s) **IGI LG680560627**

Comments: This Laboratory Grown Diamond was created by Chemical Vapor Deposition (CVD) growth process. Type IIa



**IGI**



February 13, 2025  
IGI Report No. LG680560627  
**PRINCESS CUT**

**10.13 X 10.11 X 6.81 MM**

**6.53 CARATS**  
E

**67.4%**  
75%

**Slightly Thick To Thick**

**Pointed**  
EXCELLENT  
EXCELLENT  
NONE  
IGI LG680560627

Culet  
Polish  
Symmetry  
Fluorescence  
Inscription(s)

Comments: This Laboratory Grown Diamond was created by Chemical Vapor Deposition (CVD) growth process. Type IIa