



ELECTRONIC COPY

LG680559378
Report verification at igi.org



February 14, 2025

IGI Report Number **LG680559378**

Description **LABORATORY GROWN DIAMOND**

Shape and Cutting Style **CUT CORNERED
RECTANGULAR MODIFIED
BRILLIANT**

Measurements **7.08 X 4.75 X 3.59 MM**

GRADING RESULTS

Carat Weight **1.11 CARAT**

Color Grade **FANCY YELLOW**

Clarity Grade **VVS 2**

February 14, 2025

IGI Report Number **LG680559378**

Description **LABORATORY GROWN DIAMOND**

Shape and Cutting Style **CUT CORNERED RECTANGULAR
MODIFIED BRILLIANT**

Measurements **7.08 X 4.75 X 3.59 MM**

GRADING RESULTS

Carat Weight **1.11 CARAT**

Color Grade **FANCY YELLOW**

Clarity Grade **VVS 2**

ADDITIONAL GRADING INFORMATION

Polish **EXCELLENT**

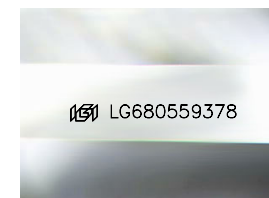
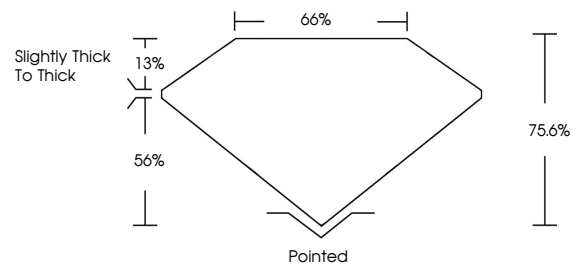
Symmetry **EXCELLENT**

Fluorescence **NONE**

Inscription(s) **IGI LG680559378**

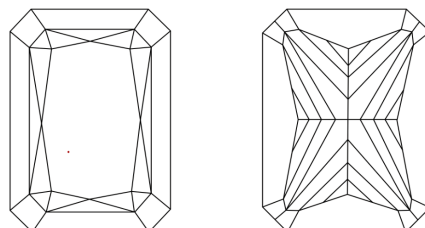
Comments: This Laboratory Grown Diamond was created by Chemical Vapor Deposition (CVD) growth process.

PROPORTIONS



Sample Image Used

CLARITY CHARACTERISTICS



KEY TO SYMBOLS

Red symbols indicate internal characteristics.
Green symbols indicate external characteristics.

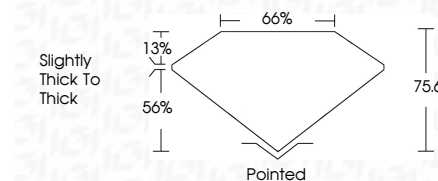
COLOR

D E F G H I J Faint Very Light Light

CLARITY

IF WS¹⁻² VS¹⁻² SI¹⁻² I¹⁻³

Internally Flawless Very Very Slightly Included Very Slightly Included Slightly Included Included



ADDITIONAL GRADING INFORMATION

Polish **EXCELLENT**

Symmetry **EXCELLENT**

Fluorescence **NONE**

Inscription(s) **IGI LG680559378**

Comments: This Laboratory Grown Diamond was created by Chemical Vapor Deposition (CVD) growth process.



IGI



February 14, 2025
IGI Report No LG680559378
CUT CORNERED RECT. MODIFIED BRILLIANT
7.08 X 4.75 X 3.59 MM
1.11 CARAT
FANCY YELLOW
VVS 2
75.6%
56%
Slightly thick to thick
Pointed
EXCELLENT
EXCELLENT
NONE
IGI LG680559378
Comments: This Laboratory Grown Diamond was created by Chemical Vapor Deposition (CVD) growth process.