



ELECTRONIC COPY

LG680559332
Report verification at igi.org



February 14, 2025
IGI Report Number **LG680559332**
Description **LABORATORY GROWN DIAMOND**
Shape and Cutting Style **SQUARE CUSHION MODIFIED BRILLIANT**
Measurements **6.83 X 6.75 X 4.68 MM**
GRADING RESULTS
Carat Weight **2.04 CARATS**
Color Grade **FANCY YELLOW**
Clarity Grade **VVS 2**

February 14, 2025
IGI Report Number **LG680559332**
Description **LABORATORY GROWN DIAMOND**
Shape and Cutting Style **SQUARE CUSHION MODIFIED BRILLIANT**
Measurements **6.83 X 6.75 X 4.68 MM**

GRADING RESULTS

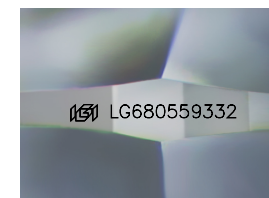
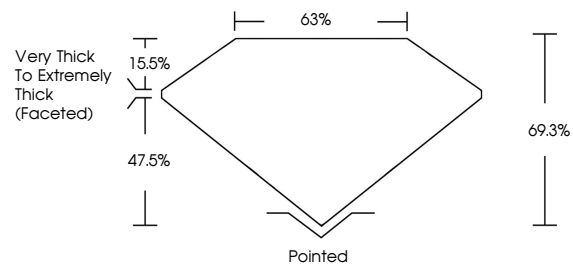
Carat Weight **2.04 CARATS**
Color Grade **FANCY YELLOW**
Clarity Grade **VVS 2**

ADDITIONAL GRADING INFORMATION

Polish **EXCELLENT**
Symmetry **EXCELLENT**
Fluorescence **NONE**
Inscription(s) **IGI LG680559332**

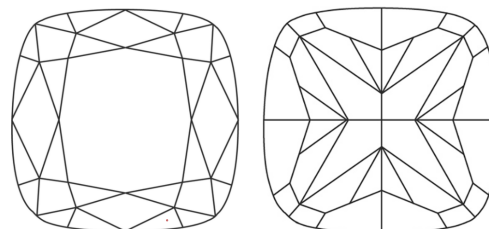
Comments: This Laboratory Grown Diamond was created by Chemical Vapor Deposition (CVD) growth process.

PROPORTIONS



Sample Image Used

CLARITY CHARACTERISTICS



KEY TO SYMBOLS

Red symbols indicate internal characteristics.
Green symbols indicate external characteristics.

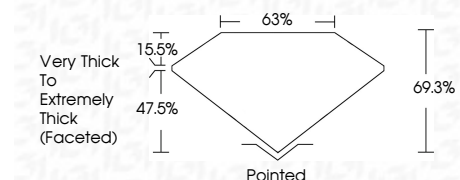
COLOR

D E F G H I J Faint Very Light Light

CLARITY

IF VS¹⁻² VS¹⁻² SI¹⁻² I¹⁻³

Internally Flawless Very Very Slightly Included Very Slightly Included Slightly Included Included



ADDITIONAL GRADING INFORMATION

Polish **EXCELLENT**
Symmetry **EXCELLENT**
Fluorescence **NONE**
Inscription(s) **IGI LG680559332**
Comments: This Laboratory Grown Diamond was created by Chemical Vapor Deposition (CVD) growth process.



IGI



February 14, 2025
IGI Report No LG680559332
SQUARE CUSHION MODIFIED BRILLIANT
6.83 X 6.75 X 4.68 MM
2.04 CARATS
FANCY YELLOW
VVS 2
69.3%
63%
Very Thick to Extremely Thick (Faceted)
Pointed
EXCELLENT
EXCELLENT
NONE
IGI LG680559332

Comments: This Laboratory Grown Diamond was created by Chemical Vapor Deposition (CVD) growth process.