



**ELECTRONIC COPY**

LG680553688  
Report verification at igi.org



February 14, 2025  
IGI Report Number **LG680553688**  
Description **LABORATORY GROWN DIAMOND**  
Shape and Cutting Style **CUT CORNERED  
RECTANGULAR MODIFIED  
BRILLIANT**  
Measurements **13.24 X 8.46 X 5.77 MM**  
**GRADING RESULTS**  
Carat Weight **5.53 CARATS**  
Color Grade **FANCY VIVID PINK**  
Clarity Grade **VS 1**

February 14, 2025  
IGI Report Number **LG680553688**  
Description **LABORATORY GROWN DIAMOND**  
Shape and Cutting Style **CUT CORNERED RECTANGULAR  
MODIFIED BRILLIANT**  
Measurements **13.24 X 8.46 X 5.77 MM**

**GRADING RESULTS**

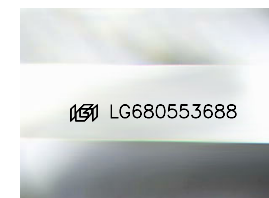
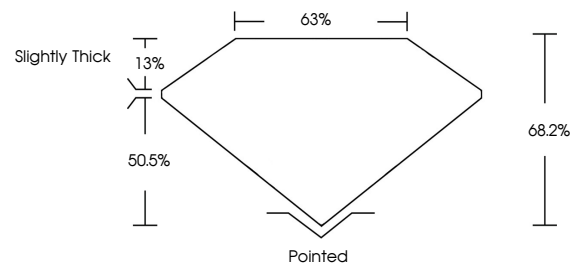
Carat Weight **5.53 CARATS**  
Color Grade **FANCY VIVID PINK**  
Clarity Grade **VS 1**

**ADDITIONAL GRADING INFORMATION**

Polish **EXCELLENT**  
Symmetry **EXCELLENT**  
Fluorescence **SLIGHT**  
Inscription(s) **IGI LG680553688**

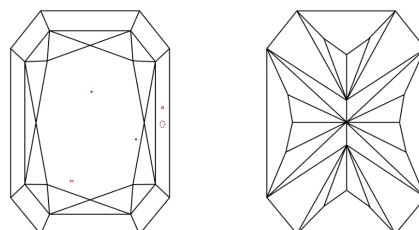
Comments: This Laboratory Grown Diamond was created by Chemical Vapor Deposition (CVD) growth process. Indications of post-growth treatment.

**PROPORTIONS**



Sample Image Used

**CLARITY CHARACTERISTICS**



**KEY TO SYMBOLS**

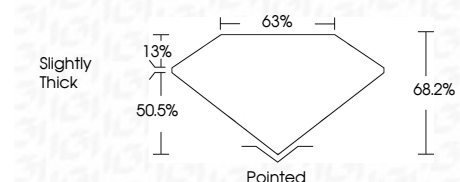
Red symbols indicate internal characteristics.  
Green symbols indicate external characteristics.

**COLOR**

D E F G H I J Faint Very Light Light

**CLARITY**

IF	VS <sup>1-2</sup>	VS <sup>1-2</sup>	SI <sup>1-2</sup>	I <sup>1-3</sup>
Internally Flawless	Very Very Slightly Included	Very Slightly Included	Slightly Included	Included



**ADDITIONAL GRADING INFORMATION**

Polish **EXCELLENT**  
Symmetry **EXCELLENT**  
Fluorescence **SLIGHT**  
Inscription(s) **IGI LG680553688**  
Comments: This Laboratory Grown Diamond was created by Chemical Vapor Deposition (CVD) growth process. Indications of post-growth treatment.



February 14, 2025  
IGI Report No LG680553688  
CUT CORNERED RECT. MODIFIED BRILLIANT  
13.24 X 8.46 X 5.77 MM  
5.53 CARATS  
FANCY VIVID PINK  
VS 1  
68.2%  
63%  
Slightly Thick  
Pointed  
EXCELLENT  
EXCELLENT  
SLIGHT  
IGI LG680553688  
Comments: This Laboratory Grown Diamond was created by Chemical Vapor Deposition (CVD) growth process. Indications of post-growth treatment.