

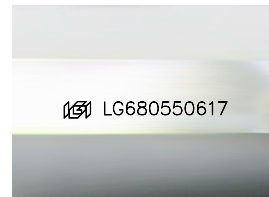
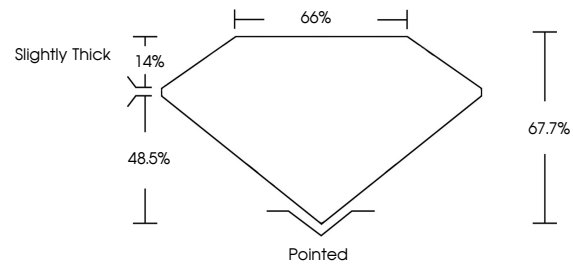


**INTERNATIONAL  
GEMOLOGICAL  
INSTITUTE**

**ELECTRONIC COPY**

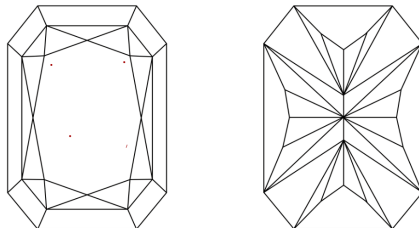
LG680550617  
Report verification at [igi.org](https://igi.org)

## PROPORTIONS



Sample Image Used

## CLARITY CHARACTERISTICS



## KEY TO SYMBOLS

Red symbols indicate internal characteristics.  
Green symbols indicate external characteristics.

**COLOR**

D E F G H I J Faint Very Light Light

## CLARITY

IF      WS<sup>1-2</sup>      VS<sup>1-2</sup>      SI<sup>1-2</sup>      I<sup>1-3</sup>

|                        |                                |                           |                      |          |
|------------------------|--------------------------------|---------------------------|----------------------|----------|
| Internally<br>Flawless | Very Very<br>Slightly Included | Very<br>Slightly Included | Slightly<br>Included | Included |
|------------------------|--------------------------------|---------------------------|----------------------|----------|

## LABORATORY GROWN DIAMOND REPORT



February 5, 2025

IGI Report Number **LG680550617**

|             |                          |
|-------------|--------------------------|
| Description | LABORATORY GROWN DIAMOND |
|-------------|--------------------------|

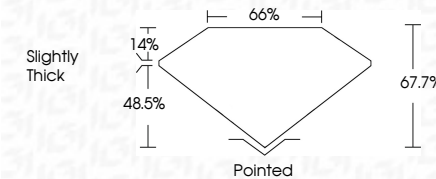
Shape and Cutting Style

Measurements 12.05 X 8.36 X 5.66 MM

## GRADING RESULTS

Carat Weight **5.09 CARATS**

|             |   |
|-------------|---|
| Color Grade | E |
|-------------|---|

Clarity Grade **VVS 2**

### ADDITIONAL GRADING INFORMATION

Polish **EXCELLENT**Symmetry **EXCELLENT**Fluorescence **NONE**Inscription(s)  LG680550617

Comments: This Laboratory Grown Diamond was created by Chemical Vapor Deposition (CVD) growth process.  
Type IIa



IG



© IGI 2020, International Gemological Institute

FD - 10 20

**www.igi.org**

THIS DOCUMENT WAS PRODUCED WITH THE FOLLOWING SECURITY MEASURES: SPECIAL DOCUMENT PAPER, INK SCREENS, WATERMARK, BACKGROUND DESIGNS, HOLOGRAM AND OTHER SECURITY FEATURES NOT LISTED AND DO EXCEED DOCUMENT SECURITY INDUSTRY GUIDELINES

|                                       |                         |             |       |                |   |              |                   |
|---------------------------------------|-------------------------|-------------|-------|----------------|---|--------------|-------------------|
| February 5, 2025                      | GI Report No LG40060617 | 5.09 CARATS | VS 2  | Slightly Thick | Polished<br>EXCELLENT<br>EXCELLENT<br>Symmetry<br>Fluorescence<br>Inscriptions(s) | None<br>NONE | Serial LG40060617 |
| CUT CORNERED RECT. MODIFIED BRILLIANT | 12.05 X 8.36 X 6.66 MM  | 67.7%       | 66%   |                |   |              |                   |
| Carat Weight                          | Color Grade             | Depth       | Table |                |   |              |                   |
| Clarity Grade                         | Girdle                  |             |       |                |   |              |                   |
|                                       |                         |             |       |                |   |              |                   |

**Comments:**  
This Laboratory Grown Diamond was  
created by Chemical Vapor Deposition  
(CVD) growth process.