



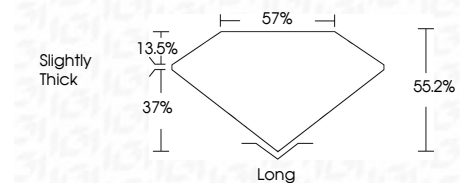
ELECTRONIC COPY

LG680549578
Report verification at igi.org



February 5, 2025
IGI Report Number **LG680549578**
Description **LABORATORY GROWN DIAMOND**
Shape and Cutting Style **HEXAGONAL MIXED CUT**
Measurements **11.67 X 6.58 X 3.63 MM**

GRADING RESULTS
Carat Weight **2.15 CARATS**
Color Grade **D**
Clarity Grade **VVS 1**



ADDITIONAL GRADING INFORMATION
Polish **EXCELLENT**
Symmetry **EXCELLENT**
Fluorescence **NONE**
Inscription(s) **IGI LG680549578**
Comments: This Laboratory Grown Diamond was created by Chemical Vapor Deposition (CVD) growth process. Type IIa



February 5, 2025
IGI Report No LG680549578
HEXAGONAL MIXED CUT
11.67 X 6.58 X 3.63 MM
2.15 CARATS
D
VVS 1
55.2%
37%
Slightly Thick
Long
EXCELLENT
EXCELLENT
NONE
IGI LG680549578
Comments: This Laboratory Grown Diamond was created by Chemical Vapor Deposition (CVD) growth process. Type IIa

LABORATORY GROWN DIAMOND REPORT

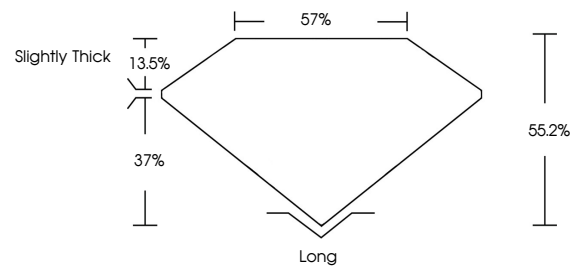
February 5, 2025
IGI Report Number **LG680549578**
Description **LABORATORY GROWN DIAMOND**
Shape and Cutting Style **HEXAGONAL MIXED CUT**
Measurements **11.67 X 6.58 X 3.63 MM**

GRADING RESULTS
Carat Weight **2.15 CARATS**
Color Grade **D**
Clarity Grade **VVS 1**

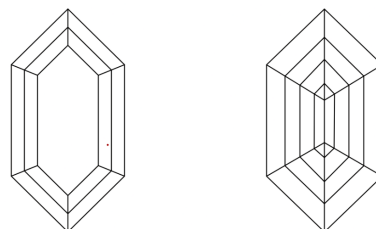
ADDITIONAL GRADING INFORMATION
Polish **EXCELLENT**
Symmetry **EXCELLENT**
Fluorescence **NONE**
Inscription(s) **IGI LG680549578**

Comments: This Laboratory Grown Diamond was created by Chemical Vapor Deposition (CVD) growth process. Type IIa

PROPORTIONS

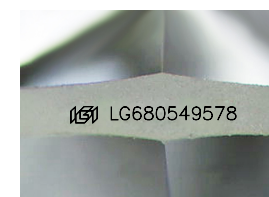


CLARITY CHARACTERISTICS



KEY TO SYMBOLS

Red symbols indicate internal characteristics.
Green symbols indicate external characteristics.



Sample Image Used

COLOR

D E F G H I J Faint Very Light Light

CLARITY

| IF | VS ¹⁻² | VS ¹⁻² | SI ¹⁻² | I ¹⁻³ |
|---------------------|-----------------------------|------------------------|-------------------|------------------|
| Internally Flawless | Very Very Slightly Included | Very Slightly Included | Slightly Included | Included |

