



**ELECTRONIC COPY**

LG680542083  
Report verification at igi.org



February 14, 2025  
IGI Report Number **LG680542083**  
Description **LABORATORY GROWN DIAMOND**  
Shape and Cutting Style **SQUARE CUSHION MODIFIED BRILLIANT**  
Measurements **5.76 X 5.73 X 3.82 MM**  
**GRADING RESULTS**  
Carat Weight **1.18 CARAT**  
Color Grade **FANCY INTENSE YELLOW**  
Clarity Grade **VS 1**

February 14, 2025  
IGI Report Number **LG680542083**  
Description **LABORATORY GROWN DIAMOND**  
Shape and Cutting Style **SQUARE CUSHION MODIFIED BRILLIANT**  
Measurements **5.76 X 5.73 X 3.82 MM**

**GRADING RESULTS**

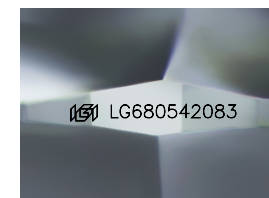
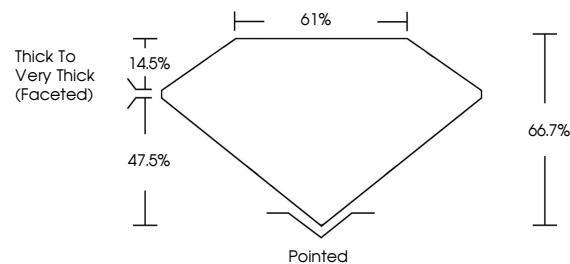
Carat Weight **1.18 CARAT**  
Color Grade **FANCY INTENSE YELLOW**  
Clarity Grade **VS 1**

**ADDITIONAL GRADING INFORMATION**

Polish **EXCELLENT**  
Symmetry **EXCELLENT**  
Fluorescence **NONE**  
Inscription(s) **IGI LG680542083**

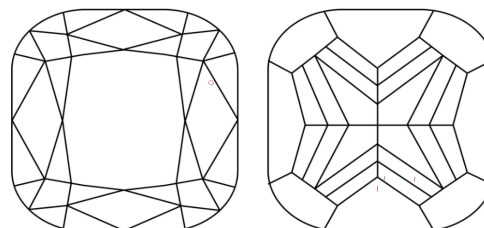
Comments: This Laboratory Grown Diamond was created by Chemical Vapor Deposition (CVD) growth process.

**PROPORTIONS**



Sample Image Used

**CLARITY CHARACTERISTICS**



**KEY TO SYMBOLS**

Red symbols indicate internal characteristics.  
Green symbols indicate external characteristics.

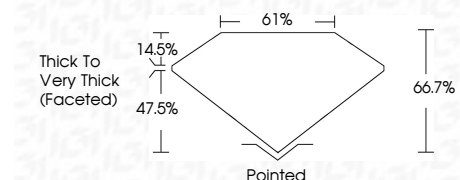
**COLOR**

D E F G H I J Faint Very Light Light

**CLARITY**

IF WS<sup>1-2</sup> VS<sup>1-2</sup> SI<sup>1-2</sup> I<sup>1-3</sup>

Internally Flawless Very Very Slightly Included Very Slightly Included Slightly Included Included



**ADDITIONAL GRADING INFORMATION**

Polish **EXCELLENT**  
Symmetry **EXCELLENT**  
Fluorescence **NONE**  
Inscription(s) **IGI LG680542083**  
Comments: This Laboratory Grown Diamond was created by Chemical Vapor Deposition (CVD) growth process.



February 14, 2025  
IGI Report No **LG680542083**  
**SQUARE CUSHION MODIFIED BRILLIANT**  
**1.18 CARAT**  
**FANCY INTENSE YELLOW**  
Carat Weight  
Color Grade  
Clarity Grade  
Depth  
Table  
Girdle  
Thick to Very Thick (Faceted)  
Culet  
Polish  
Symmetry  
Fluorescence  
Inscription(s)  
**EXCELLENT**  
**EXCELLENT**  
**NONE**  
**IGI LG680542083**

Comments: This Laboratory Grown Diamond was created by Chemical Vapor Deposition (CVD) growth process.