



ELECTRONIC COPY

LG680538741 Report verification at igi.org



February 1, 2025

IGI Report Number LG680538741

Description LABORATORY GROWN DIAMOND

Shape and Cutting Style ROUND BRILLIANT

Measurements 8.88 - 8.93 X 5.51 MM

GRADING RESULTS

Carat Weight 2.71 CARATS

Color Grade E

Clarity Grade VS 1

Cut Grade IDEAL

February 1, 2025 IGI Report Number LG680538741 Description LABORATORY GROWN DIAMOND Shape and Cutting Style ROUND BRILLIANT Measurements 8.88 - 8.93 X 5.51 MM

GRADING RESULTS

Carat Weight 2.71 CARATS

Color Grade E

Clarity Grade VS 1

Cut Grade IDEAL

ADDITIONAL GRADING INFORMATION

Polish EXCELLENT

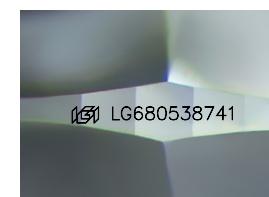
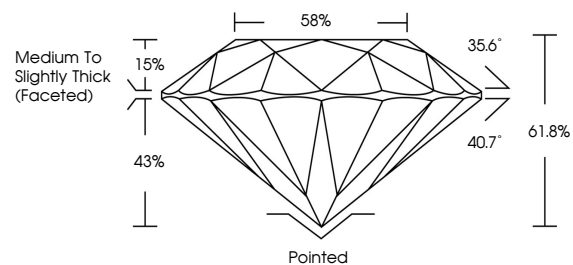
Symmetry EXCELLENT

Fluorescence NONE

Inscription(s) LG680538741

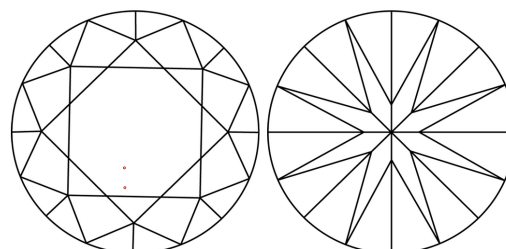
Comments: HEARTS & ARROWS This Laboratory Grown Diamond was created by Chemical Vapor Deposition (CVD) growth process. Type IIa

PROPORTIONS



Sample Image Used

CLARITY CHARACTERISTICS



KEY TO SYMBOLS

Red symbols indicate internal characteristics. Green symbols indicate external characteristics.



www.igi.org

COLOR

D E F G H I J Faint Very Light Light

CLARITY

IF WS 1-2 VS 1-2 SI 1-2 I 1-3

Internally Flawless Very Very Slightly Included Very Slightly Included Slightly Included Included

ADDITIONAL GRADING INFORMATION

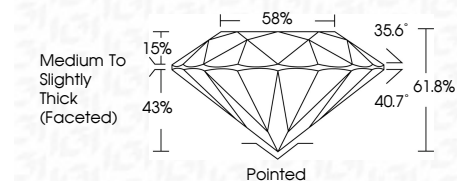
Polish EXCELLENT

Symmetry EXCELLENT

Fluorescence NONE

Inscription(s) LG680538741

Comments: HEARTS & ARROWS This Laboratory Grown Diamond was created by Chemical Vapor Deposition (CVD) growth process. Type IIa



February 1, 2025 IGI Report No LG680538741 ROUND BRILLIANT 8.88 - 8.93 X 5.51 MM 2.71 CARATS E VS 1 IDEAL 61.8% 58% Medium To Slightly Thick (Faceted) Pointed EXCELLENT EXCELLENT NONE LG680538741

Comments: HEARTS & ARROWS This Laboratory Grown Diamond was created by Chemical Vapor Deposition (CVD) growth process. Type IIa