



**ELECTRONIC COPY**

## LABORATORY GROWN DIAMOND REPORT

March 13, 2025	
IGI Report Number	LG680538721
Description	LABORATORY GROWN DIAMOND
Shape and Cutting Style	ROUND BRILLIANT
Measurements	8.73 - 8.76 X 5.39 MM

## GRADING RESULTS

Carat Weight	2.54 CARATS
Color Grade	D
Clarity Grade	VS 1
Cut Grade	IDEAL

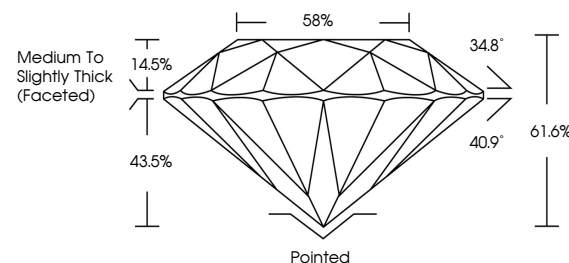
### ADDITIONAL GRADING INFORMATION

Polish	EXCELLENT
Symmetry	EXCELLENT
Fluorescence	NONE
Inscription(s)	 LG680538721

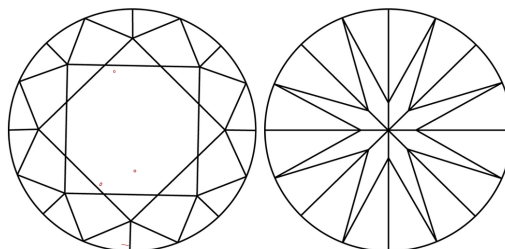
Comments: HEARTS & ARROWS  
This Laboratory Grown Diamond was created by  
Chemical Vapor Deposition (CVD) growth process.  
Type IIa

LG680538721  
Report verification at [igi.org](https://www.igi.org)

## PROPORTIONS



## CLARITY CHARACTERISTICS

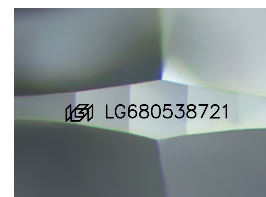


### KEY TO SYMBOLS

Red symbols indicate internal characteristics.  
Green symbols indicate external characteristics.



**www.igi.org**



Sample Image Used

## COLOR

D E F G H I J Faint Very Light Light

## CLARITY

IF      WS<sup>1-2</sup>      VS<sup>1-2</sup>      SI<sup>1-2</sup>      I<sup>1-3</sup>

Internally Flawless	Very Very Slightly Included	Very Slightly Included	Slightly Included	Included
------------------------	--------------------------------	---------------------------	----------------------	----------



© IGI 2020, International Gemological Institute

FD - 10 20

THIS DOCUMENT WAS PRODUCED WITH THE FOLLOWING SECURITY MEASURES: SPECIAL DOCUMENT PAPER, INK SCREENS, WATERMARK, BACKGROUND DESIGNS, HOLOGRAM AND OTHER SECURITY FEATURES NOT LISTED AND DO EXCEED DOCUMENT SECURITY INDUSTRY GUIDELINE

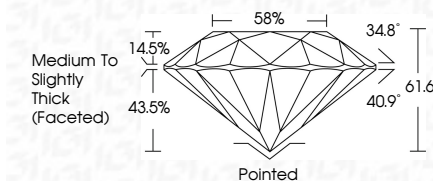
## LABORATORY GROWN DIAMOND REPORT



March 13, 2025	
IGI Report Number	LG680538721
Description	LABORATORY GROWN DIAMOND
Shape and Cutting Style	ROUND BRILLIANT
Measurements	8.73 - 8.76 X 5.39 MM

## GRADING RESULTS

Carat Weight	2.54 CARATS
Color Grade	D
Clarity Grade	VS 1
Cut Grade	IDEAL



### ADDITIONAL GRADING INFORMATION

Polish	EXCELLENT
Symmetry	EXCELLENT
Fluorescence	NONE
Inscription(s)	16 LG 680538721

Comments: HEARTS & ARROWS  
This Laboratory Grown Diamond was created by  
Chemical Vapor Deposition (CVD) growth process.  
Type IIa



March 13, 2026	GI Report No LG40538721	ROUND BRILLIANT	2.54 CARATS	D	VS 1	IDEAL	61.6%	89%	Medium to slightly Thick Faceted	Polished	EXCELLENT	EXCELLENT	NONE	lg40538721	Comments: This Laboratory Grown Diamond was created by Chemical Vapor Deposition (CVD) growth process.
		Color Grade	Carat Weight	Clarity Grade	Cut Grade	Depth	Table	Girdle	Culet	Polish	Symmetry	Fluorescence	Inscriptions(s)		
		I-J	0.78 - 0.75 X 5.39 MM	VS1	Very Good	71.5	95.5	Medium	None	Excellent	Excellent	None			