



**ELECTRONIC COPY**

## LABORATORY GROWN DIAMOND REPORT

February 17, 2025	
IGI Report Number	LG680525080
Description	LABORATORY GROWN DIAMOND
Shape and Cutting Style	ROUND BRILLIANT
Measurements	8.39 - 8.42 X 5.18 MM

## GRADING RESULTS

Carat Weight	2.23 CARATS
Color Grade	D
Clarity Grade	VVS 1
Cut Grade	IDEAL

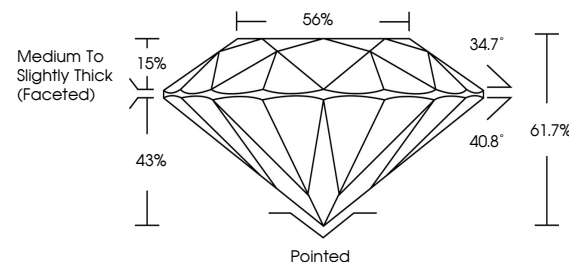
### ADDITIONAL GRADING INFORMATION

Polish	EXCELLENT
Symmetry	EXCELLENT
Fluorescence	NONE
Inscription(s)	15 LG680525080

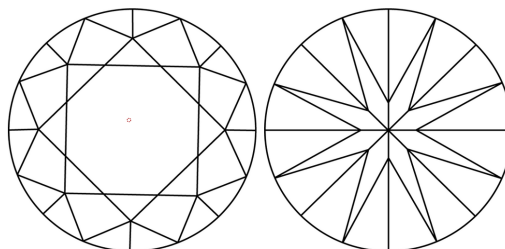
Comments: HEARTS & ARROWS  
As Grown - No indication of post-growth treatment.  
This Laboratory Grown Diamond was created by High  
Pressure High Temperature (HPHT) growth process.  
Type II

LG680525080  
Report verification at lqi.org

## PROPORTIONS



## CLARITY CHARACTERISTICS

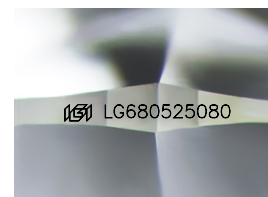


### KEY TO SYMBOLS

Red symbols indicate internal characteristics.  
Green symbols indicate external characteristics.



**www.igi.org**



Sample Image Used

## COLOR

D E F G H I J Faint Very Light Light

## CLARITY

IF                      WS<sup>1-2</sup>                      VS<sup>1-2</sup>                      SI<sup>1-2</sup>                      1-3

Internally Flawless	Very Very Slightly Included	Very Slightly Included	Slightly Included	Included
------------------------	--------------------------------	---------------------------	----------------------	----------



© IGI 2020, International Gemological Institute

FD - 10 20

THIS DOCUMENT WAS PRODUCED WITH THE FOLLOWING SECURITY MEASURES: SPECIAL DOCUMENT PAPER, INK SCREENS, WATERMARK, BACKGROUND DESIGNS, HOLOGRAM AND OTHER SECURITY FEATURES NOT LISTED AND DO EXCEED DOCUMENT SECURITY INDUSTRY GUIDELINE

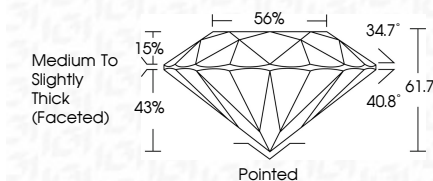
## LABORATORY GROWN DIAMOND REPORT



February 17, 2025	
IGI Report Number	LG680525080
Description	LABORATORY GROWN DIAMOND
Shape and Cutting Style	ROUND BRILLIANT
Measurements	8.39 - 8.42 X 5.18 MM

## GRADING RESULTS

Carat Weight	2.23 CARATS
Color Grade	D
Clarity Grade	VVS 1
Cut Grade	IDEAL



### ADDITIONAL GRADING INFORMATION

Polish	EXCELLENT
Symmetry	EXCELLENT
Fluorescence	NONE
Inscription(s)	(15) LG-680525080

Comments: HEARTS & ARROWS  
As Grown - No indication of post-growth treatment.  
This Laboratory Grown Diamond was created by High  
Pressure High Temperature (HPHT) growth process.  
Type II



February 17, 2025	
GI Report No: LSG45025080	
ROUND BRILLIANT	
Carat Weight	2.23 CARATS
Color Grade	D
Clarity Grade	VVS 1
Cut Grade	IDEAL
Depth	61.7%
Table	55%
Girdle	Medium to Slightly Thick (Faceted)
Culet	Polished
Polish	EXCELLENT
Symmetry	EXCELLENT
Fluorescence	NONE
Inscriptions	lgf LSG45025080
Comments:	
	HEART & ARROW
	None - No indication of post-growth treatment.
	This Laboratory Grown Diamond was created by High Pressure High Temperature (HPHT) growth process.