

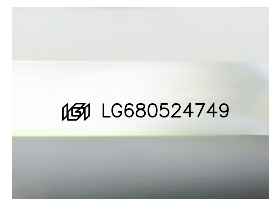
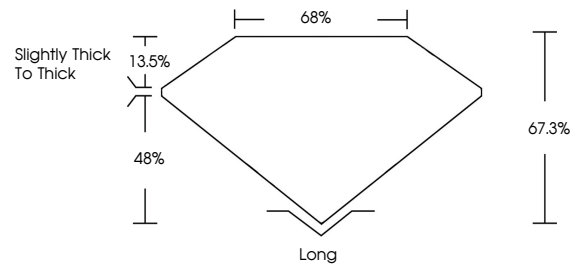


**INTERNATIONAL  
GEMOLOGICAL  
INSTITUTE**

**ELECTRONIC COPY**

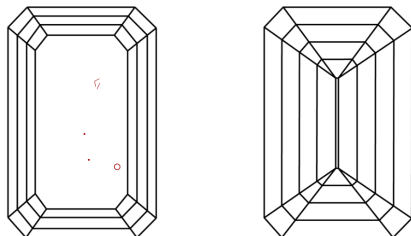
LG680524749  
Report verification at [igi.org](https://igi.org)

## PROPORTIONS



Sample Image Used

## CLARITY CHARACTERISTICS



## KEY TO SYMBOLS

Red symbols indicate internal characteristics.  
Green symbols indicate external characteristics.

## COLOR

D E F G H I J Faint Very Light Light

## CLARITY

IF                      WS<sup>1-2</sup>                      VS<sup>1-2</sup>                      SI<sup>1-2</sup>                      I<sup>1-3</sup>

Internally Flawless	Very Very Slightly Included	Very Slightly Included	Slightly Included	Included
------------------------	--------------------------------	---------------------------	----------------------	----------



February 12, 2025

IGI Report Number **LG680524749**

Description	LABORATORY GROWN DIAMOND
-------------	--------------------------

Shape and Cutting Style **EMERALD CUT**

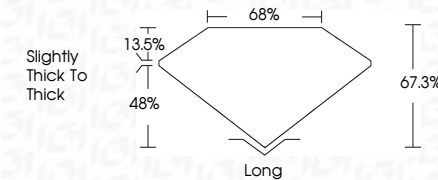
Measurements **7.56 X 5.29 X 3.56 MM**

## GRADING RESULTS

Carat Weight **1.51 CARAT**

Color Grade	E
-------------	---

Clarity Grade VS 2



### ADDITIONAL GRADING INFORMATION

Polish **EXCELLENT**

Symmetry **VERY GOOD**

Fluorescence **NONE**

Inscription(s) **131 LG680524749**

Comments: This Laboratory Grown Diamond was created by Chemical Vapor Deposition (CVD) growth process.  
Type IIa



IG



© IGI 2020, International Gemological Institute

FD - 10 20

**www.igi.org**

THIS DOCUMENT WAS PRODUCED WITH THE FOLLOWING SECURITY MEASURES: SPECIAL DOCUMENT PAPER, INK SCREENS, WATERMARK, BACKGROUND DESIGNS, HOLOGRAM AND OTHER SECURITY FEATURES NOT LISTED AND DO EXCEED DOCUMENT SECURITY INDUSTRY GUIDELINES

February 12, 2025  
 IGI Report No LG680524749

<p> <b>PER REPORT NO 13583621/49</b>  <b>GENERAL CUT</b>  <b>7.56 X 5.29 X 3.56 MM</b>  <b>Carat Weight</b>  <b>Color Grade</b>  <b>Clarity Grade</b>  <b>Depth</b>  <b>Table</b>  <b>Grade</b>  <b>Slightly Thick to Thick</b> </p>	<p> <b>1.51 CARAT</b>  <b>E</b>  <b>Vs 2</b>  <b>67.9%</b>  <b>68%</b>  <b>Slightly Thick to Thick</b> </p>	<p> <b>Long</b>  <b>VERY GOOD</b>  <b>EXCELLENT</b>  <b>NONE</b>  <b>see comments</b> </p>
--	---	--

**Comments:**  
This Laboratory Grown Diamond was created by Chemical Vapor Deposition (CVD) growth process.