



ELECTRONIC COPY

LG680519635
Report verification at igi.org



January 30, 2025

IGI Report Number **LG680519635**

Description **LABORATORY GROWN DIAMOND**

Shape and Cutting Style **OVAL BRILLIANT**

Measurements **14.51 X 9.88 X 6.09 MM**

GRADING RESULTS

Carat Weight **5.56 CARATS**

Color Grade **E**

Clarity Grade **VS 1**

January 30, 2025

IGI Report Number **LG680519635**

Description **LABORATORY GROWN DIAMOND**

Shape and Cutting Style **OVAL BRILLIANT**

Measurements **14.51 X 9.88 X 6.09 MM**

GRADING RESULTS

Carat Weight **5.56 CARATS**

Color Grade **E**

Clarity Grade **VS 1**

ADDITIONAL GRADING INFORMATION

Polish **EXCELLENT**

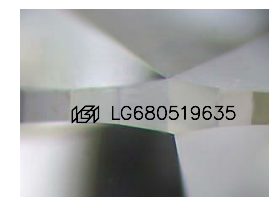
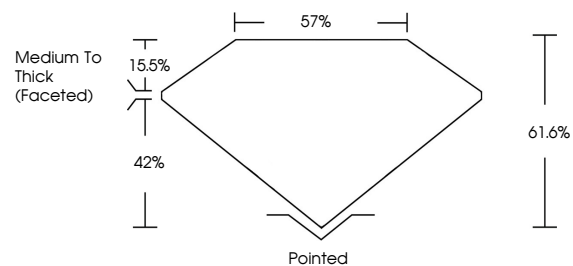
Symmetry **EXCELLENT**

Fluorescence **NONE**

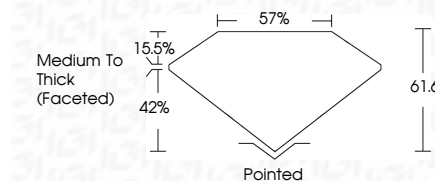
Inscription(s) **IGI LG680519635**

Comments: This Laboratory Grown Diamond was created by Chemical Vapor Deposition (CVD) growth process.
Type IIa

PROPORTIONS



Sample Image Used



COLOR

D E F G H I J Faint Very Light Light

CLARITY

IF	WS ¹⁻²	VS ¹⁻²	SI ¹⁻²	I ¹⁻³
Internally Flawless	Very Very Slightly Included	Very Slightly Included	Slightly Included	Included

ADDITIONAL GRADING INFORMATION

Polish **EXCELLENT**

Symmetry **EXCELLENT**

Fluorescence **NONE**

Inscription(s) **IGI LG680519635**

Comments: This Laboratory Grown Diamond was created by Chemical Vapor Deposition (CVD) growth process.
Type IIa



IGI



January 30, 2025
IGI Report No LG680519635
OVAL BRILLIANT

14.51 X 9.88 X 6.09 MM

5.56 CARATS
E

Carat Weight
Color Grade
Clarity Grade
Table
Depth
Girdle
Medium To Thick (Faceted)

61.6%
42%
57%

Pointed
EXCELLENT
EXCELLENT
NONE
IGI LG680519635

Culet
Polish
Symmetry
Fluorescence
Inscription(s)

Comments: This Laboratory Grown Diamond was created by Chemical Vapor Deposition (CVD) growth process.
Type IIa