



**ELECTRONIC COPY**

LG680518456  
Report verification at igi.org



February 13, 2025  
IGI Report Number **LG680518456**  
Description **LABORATORY GROWN DIAMOND**  
Shape and Cutting Style **CUSHION MODIFIED BRILLIANT**  
Measurements **6.35 X 5.80 X 3.96 MM**  
**GRADING RESULTS**  
Carat Weight **1.38 CARAT**  
Color Grade **FANCY VIVID YELLOW**  
Clarity Grade **VS 1**

February 13, 2025  
IGI Report Number **LG680518456**  
Description **LABORATORY GROWN DIAMOND**  
Shape and Cutting Style **CUSHION MODIFIED BRILLIANT**  
Measurements **6.35 X 5.80 X 3.96 MM**

**GRADING RESULTS**

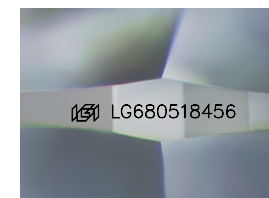
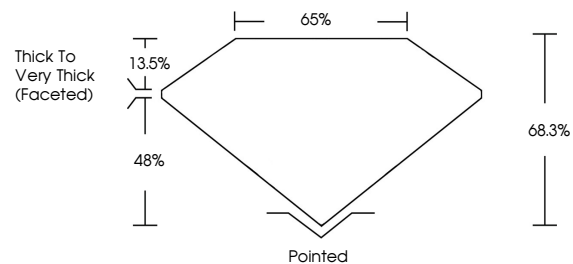
Carat Weight **1.38 CARAT**  
Color Grade **FANCY VIVID YELLOW**  
Clarity Grade **VS 1**

**ADDITIONAL GRADING INFORMATION**

Polish **EXCELLENT**  
Symmetry **EXCELLENT**  
Fluorescence **NONE**  
Inscription(s) **LG680518456**

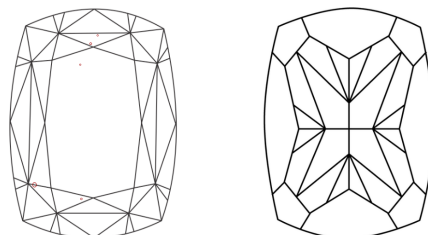
Comments: This Laboratory Grown Diamond was created by Chemical Vapor Deposition (CVD) growth process.

**PROPORTIONS**



Sample Image Used

**CLARITY CHARACTERISTICS**



**KEY TO SYMBOLS**

Red symbols indicate internal characteristics.  
Green symbols indicate external characteristics.

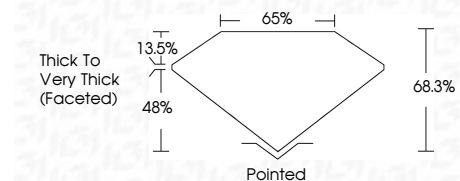
**COLOR**

D E F G H I J Faint Very Light Light

**CLARITY**

IF VS<sup>1-2</sup> VS<sup>1-2</sup> SI<sup>1-2</sup> I<sup>1-3</sup>

Internally Flawless Very Very Slightly Included Very Slightly Included Slightly Included Included



**ADDITIONAL GRADING INFORMATION**

Polish **EXCELLENT**  
Symmetry **EXCELLENT**  
Fluorescence **NONE**  
Inscription(s) **LG680518456**  
Comments: This Laboratory Grown Diamond was created by Chemical Vapor Deposition (CVD) growth process.



February 13, 2025  
IGI Report No **LG680518456**  
**CUSHION MODIFIED BRILLIANT**  
**6.35 X 5.80 X 3.96 MM**  
Carat Weight **1.38 CARAT**  
Color Grade **FANCY VIVID YELLOW**  
Clarity Grade **VS 1**  
Depth **48.0%**  
Table **13.5%**  
Girdle **Thick to Very Thick (Faceted)**  
Culet **Pointed**  
Polish **EXCELLENT**  
Symmetry **EXCELLENT**  
Fluorescence **NONE**  
Inscription(s) **LG680518456**  
Comments: This Laboratory Grown Diamond was created by Chemical Vapor Deposition (CVD) growth process.