



ELECTRONIC COPY

LG680505959
Report verification at igi.org



February 13, 2025
IGI Report Number **LG680505959**
Description **LABORATORY GROWN DIAMOND**
Shape and Cutting Style **CUSHION MODIFIED BRILLIANT**
Measurements **7.89 X 6.48 X 4.39 MM**
GRADING RESULTS
Carat Weight **1.91 CARAT**
Color Grade **FANCY INTENSE BROWNISH YELLOW**
Clarity Grade **VVS 2**

LABORATORY GROWN DIAMOND REPORT

February 13, 2025
IGI Report Number **LG680505959**
Description **LABORATORY GROWN DIAMOND**
Shape and Cutting Style **CUSHION MODIFIED BRILLIANT**
Measurements **7.89 X 6.48 X 4.39 MM**

GRADING RESULTS

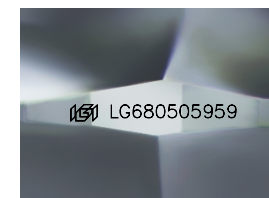
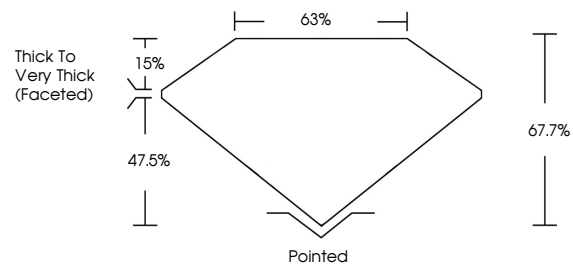
Carat Weight **1.91 CARAT**
Color Grade **FANCY INTENSE BROWNISH YELLOW**
Clarity Grade **VVS 2**

ADDITIONAL GRADING INFORMATION

Polish **EXCELLENT**
Symmetry **EXCELLENT**
Fluorescence **VERY SLIGHT**
Inscription(s) **IGI LG680505959**

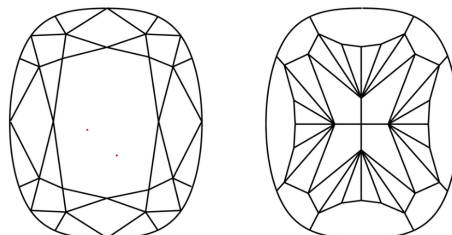
Comments: This Laboratory Grown Diamond was created by Chemical Vapor Deposition (CVD) growth process.
Indications of post-growth treatment.

PROPORTIONS



Sample Image Used

CLARITY CHARACTERISTICS



KEY TO SYMBOLS

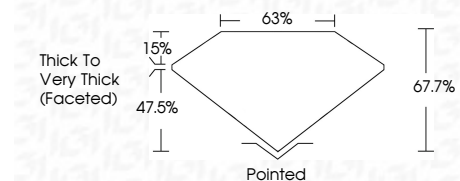
Red symbols indicate internal characteristics.
Green symbols indicate external characteristics.

COLOR

D E F G H I J Faint Very Light Light

CLARITY

IF	VS ¹⁻²	VS ¹⁻²	SI ¹⁻²	I ¹⁻³
Internally Flawless	Very Very Slightly Included	Very Slightly Included	Slightly Included	Included



ADDITIONAL GRADING INFORMATION

Polish **EXCELLENT**
Symmetry **EXCELLENT**
Fluorescence **VERY SLIGHT**
Inscription(s) **IGI LG680505959**
Comments: This Laboratory Grown Diamond was created by Chemical Vapor Deposition (CVD) growth process.
Indications of post-growth treatment.



February 13, 2025
IGI Report No **LG680505959**
CUSHION MODIFIED BRILLIANT
7.89 X 6.48 X 4.39 MM
1.91 CARAT
FANCY INTENSE BROWNISH YELLOW
VVS 2
67.7%
63%
Thick to Very Thick (Faceted)
Pointed
EXCELLENT
EXCELLENT
VERY SLIGHT
IGI LG680505959
Comments: This Laboratory Grown Diamond was created by Chemical Vapor Deposition (CVD) growth process.
Indications of post-growth treatment.