

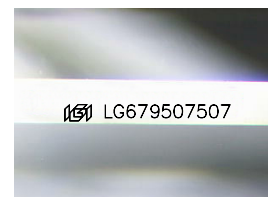
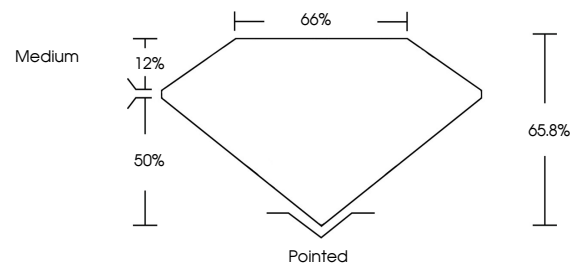


**ELECTRONIC COPY**

## LABORATORY GROWN DIAMOND REPORT

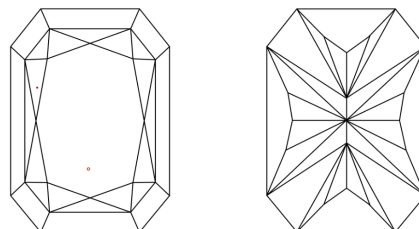
LG679507507  
Report verification at [igi.org](https://igi.org)

## PROPORTIONS



Sample Image Used

## CLARITY CHARACTERISTICS



### KEY TO SYMBOLS

Red symbols indicate internal characteristics.  
Green symbols indicate external characteristics.

## COLOR

D E F G H I J Faint Very Light Light

## CLARITY

IF	VS <sup>1-2</sup>	VS <sup>1-2</sup>	SI <sup>1-2</sup>	I <sup>1-3</sup>
Internally Flawless	Very Very Slightly Included	Very Slightly Included	Slightly Included	Included

## LABORATORY GROWN DIAMOND REPORT



January 28, 2025

IGI Report Number **LG679507507**Description **LABORATORY GROWN DIAMOND**

Shape and Cutting Style

CUT CORNERED  
RECTANGULAR MODIFIED  
BRILLIANT

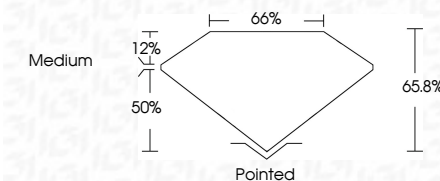
Measurements **11.74 X 8.69 X 5.72 MM**

## GRADING RESULTS

Carat Weight **5.03 CARATS**

Color Grade **E**

Clarity Grade VS 1



### ADDITIONAL GRADING INFORMATION

Polish EXCELLENT

Symmetry **EXCELLENT**Fluorescence **NONE**Inscription(s)  LG679507507

Comments: This Laboratory Grown Diamond was created by Chemical Vapor Deposition (CVD) growth process.  
Type IIa



© IGI 2020, International Gemological Institute

FD - 10 20

**www.igi.org**

THIS DOCUMENT WAS PRODUCED WITH THE FOLLOWING SECURITY MEASURES: SPECIAL DOCUMENT PAPER, INK SCREENS, WATERMARK, BACKGROUND DESIGNS, HOLOGRAM AND OTHER SECURITY FEATURES NOT LISTED AND DO EXCEED DOCUMENT SECURITY INDUSTRY GUIDELINE

January 28, 2025	GI Report No. LG579507587	5.03 CARATS
CUIT CORNERED RECT. MODIFIED BRILLIANT		E
	Carat Weight	VS 1
11.14 X 8.49 X 5.72 MM	Color Grade	65.0%
	Clarity Grade	65%
	Depth	Medium
	Table	
	Girdle	
	Culet	Pointed
	Polish	EXCELLENT
	Symmetry	EXCELLENT
	Fluorescence	NONE
	Inscriptions(s)	681 LG579507587

Comments:

This Laboratory Grown Diamond was  
 analyzed using Laser Assisted Vapor Deposition  
 (LAVD) growth process.  
 Type IIG