



**ELECTRONIC COPY**

LG678596829  
Report verification at igi.org



February 5, 2025

IGI Report Number **LG678596829**

Description **LABORATORY GROWN DIAMOND**

Shape and Cutting Style **CUT CORNERED  
RECTANGULAR MODIFIED  
BRILLIANT**

Measurements **10.01 X 6.93 X 4.72 MM**

**GRADING RESULTS**

Carat Weight **3.09 CARATS**

Color Grade **FANCY VIVID YELLOW**

Clarity Grade **VS 1**

**LABORATORY GROWN DIAMOND REPORT**

February 5, 2025

IGI Report Number **LG678596829**

Description **LABORATORY GROWN DIAMOND**

Shape and Cutting Style **CUT CORNERED RECTANGULAR  
MODIFIED BRILLIANT**

Measurements **10.01 X 6.93 X 4.72 MM**

**GRADING RESULTS**

Carat Weight **3.09 CARATS**

Color Grade **FANCY VIVID YELLOW**

Clarity Grade **VS 1**

**ADDITIONAL GRADING INFORMATION**

Polish **EXCELLENT**

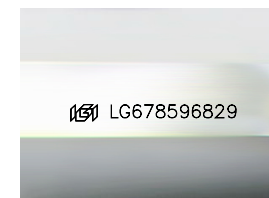
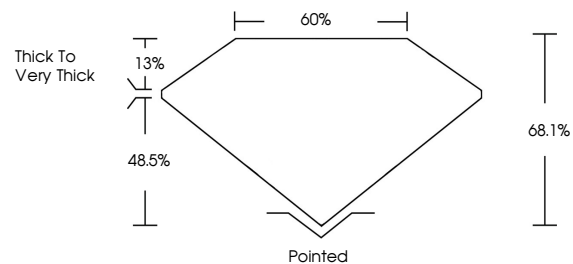
Symmetry **EXCELLENT**

Fluorescence **NONE**

Inscription(s) **IGI LG678596829**

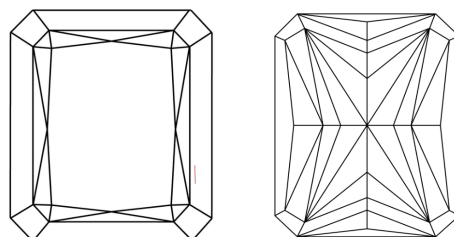
Comments: This Laboratory Grown Diamond was created by Chemical Vapor Deposition (CVD) growth process.

**PROPORTIONS**



Sample Image Used

**CLARITY CHARACTERISTICS**



**KEY TO SYMBOLS**

Red symbols indicate internal characteristics.  
Green symbols indicate external characteristics.

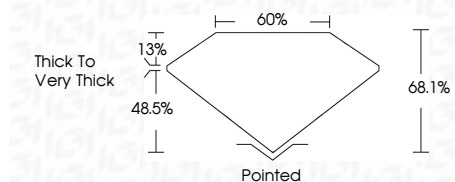
**COLOR**

D E F G H I J Faint Very Light Light

**CLARITY**

IF WS<sup>1-2</sup> VS<sup>1-2</sup> SI<sup>1-2</sup> I<sup>1-3</sup>

Internally Flawless Very Very Slightly Included Very Slightly Included Slightly Included Included



**ADDITIONAL GRADING INFORMATION**

Polish **EXCELLENT**

Symmetry **EXCELLENT**

Fluorescence **NONE**

Inscription(s) **IGI LG678596829**

Comments: This Laboratory Grown Diamond was created by Chemical Vapor Deposition (CVD) growth process.



**IGI**



February 5, 2025	IGI Report No. LG678596829	CUT CORNERED RECT. MODIFIED BRILLIANT	10.01 X 6.93 X 4.72 MM	3.09 CARATS	FANCY VIVID YELLOW	VS 1	68.1%	60%	Thick to Very Thick	Pointed	EXCELLENT	EXCELLENT	NONE	IGI LG678596829
				Carat Weight	Color Grade	Clarity Grade	Table	Girdle		Culet	Polish	Symmetry	Fluorescence	Inscription(s)

Comments: This Laboratory Grown Diamond was created by Chemical Vapor Deposition (CVD) growth process.