

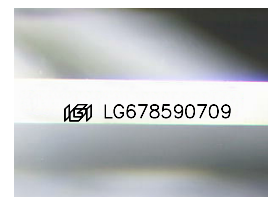
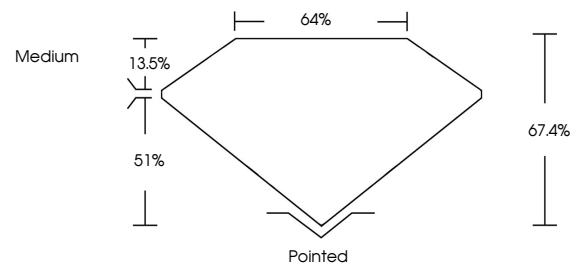


ELECTRONIC COPY

LABORATORY GROWN DIAMOND REPORT

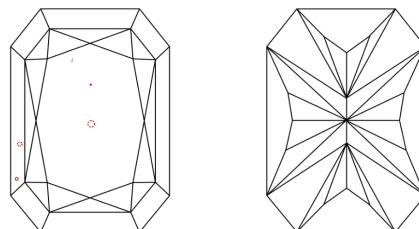
LG678590709
Report verification at igi.org

PROPORTIONS



Sample Image Used

CLARITY CHARACTERISTICS



KEY TO SYMBOLS

Red symbols indicate internal characteristics.
Green symbols indicate external characteristics.

COLOR

D E F G H I J Faint Very Light Light

CLARITY

IF	VS ¹⁻²	VS ¹⁻²	SI ¹⁻²	I ¹⁻³
Internally Flawless	Very Very Slightly Included	Very Slightly Included	Slightly Included	Included

LABORATORY GROWN DIAMOND REPORT



January 30, 2025

IGI Report Number **LG678590709**

Description	LABORATORY GROWN DIAMOND
-------------	--------------------------

Shape and Cutting Style

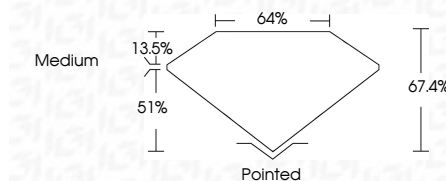
Measurements **9.97 X 7.25 X 4.89 MM**

GRADING RESULTS

Carat Weight **3.08 CARATS**

Color Grade D

Clarity Grade VS 2



ADDITIONAL GRADING INFORMATION

Polish **EXCELLENT**Symmetry **EXCELLENT**Fluorescence NONEInscription(s) LG678590709

Comments: This Laboratory Grown Diamond was created by Chemical Vapor Deposition (CVD) growth process.
Type IIa



© IGI 2020, International Gemological Institute

FD - 10 20

www.igi.org

THIS DOCUMENT WAS PRODUCED WITH THE FOLLOWING SECURITY MEASURES: SPECIAL DOCUMENT PAPER, INK SCREENS, WATERMARK, BACKGROUND DESIGNS, HOLOGRAM AND OTHER SECURITY FEATURES NOT LISTED AND DO EXCEED DOCUMENT SECURITY INDUSTRY GUIDELINE

January 30, 2025	
Report No. LG21860709	
CU REPORTED RECT. MODIFIED BRILLIANT CUT	
WT 0.97 X 7.25 X 4.99 MM	
Carat Weight	3.08 CARATS
Color Grade	D
Clarity Grade	VS 2
Depth	67.4%
Table	64%
Girdle	Medium
Culet	Pointed
Polish	EXCELLENT
Symmetry	EXCELLENT
Fluorescence	NONE
Inscriptions(s)	1681 LG21860709
Comments:	
	The Laboratory Grown Diamond was found to be a High Purity Type IIa CVD growth process.
	Type IIG