



ELECTRONIC COPY

LABORATORY GROWN DIAMOND REPORT

| | |
|-------------------------|--------------------------|
| February 6, 2025 | |
| IGI Report Number | LG678590292 |
| Description | LABORATORY GROWN DIAMOND |
| Shape and Cutting Style | ROUND BRILLIANT |
| Measurements | 8.02 - 8.07 X 5.01 MM |

GRADING RESULTS

| | |
|---------------|------------------|
| Carat Weight | 2.01 CARATS |
| Color Grade | FANCY VIVID PINK |
| Clarity Grade | VS 2 |
| Cut Grade | IDEAL |

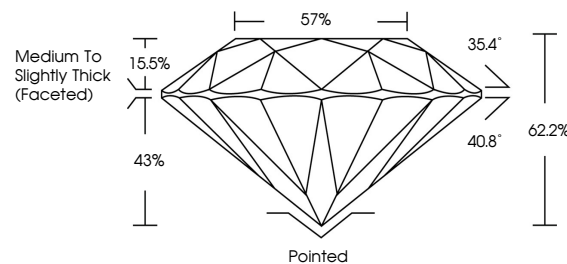
ADDITIONAL GRADING INFORMATION

| | |
|----------------|----------------|
| Polish | EXCELLENT |
| Symmetry | EXCELLENT |
| Fluorescence | SLIGHT |
| Inscription(s) | 15 LG678590292 |

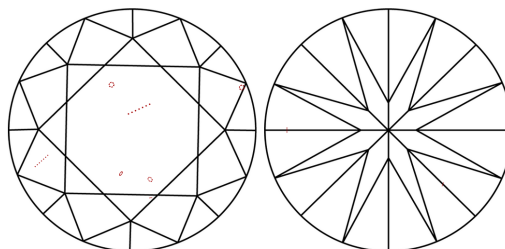
Comments: This Laboratory Grown Diamond was created by Chemical Vapor Deposition (CVD) growth process.
Indications of post-growth treatment.

LG678590292
Report verification at lqi.org

PROPORTIONS

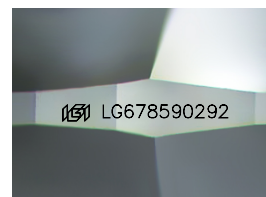


CLARITY CHARACTERISTICS



KEY TO SYMBOLS

Red symbols indicate internal characteristics.
Green symbols indicate external characteristics.



Sample Image Used

COLOR

D E F G H I J Faint Very Light Light

CLARITY

IF WS¹⁻² VS¹⁻² SI¹⁻² |¹⁻³

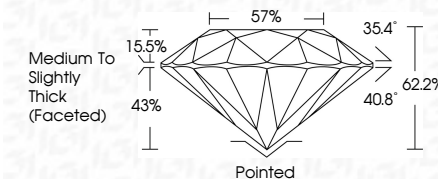
| Internally Flawless | Very Very Slightly Included | Very Slightly Included | Slightly Included | Included |
|------------------------|--------------------------------|---------------------------|----------------------|----------|
|------------------------|--------------------------------|---------------------------|----------------------|----------|



| | |
|-------------------------|--------------------------|
| February 6, 2025 | |
| IGI Report Number | LG678590292 |
| Description | LABORATORY GROWN DIAMOND |
| Shape and Cutting Style | ROUND BRILLIANT |
| Measurements | 8.02 - 8.07 X 5.01 MM |

GRADING RESULTS

| | |
|---------------|------------------|
| Carat Weight | 2.01 CARATS |
| Color Grade | FANCY VIVID PINK |
| Clarity Grade | VS 2 |
| Cut Grade | IDEAL |



ADDITIONAL GRADING INFORMATION

| | |
|--|---------------------------|
| Polish | EXCELLENT |
| Symmetry | EXCELLENT |
| Fluorescence | SLIGHT |
| Inscription(s) | LG LG678590292 |
| <p>Comments: This Laboratory Grown Diamond was created by Chemical Vapor Deposition (CVD) growth process.</p> <p>Indications of post-growth treatment.</p> | |



© IGI 2020, International Gemological Institute

FD - 10 20

www.igi.org



THIS DOCUMENT WAS PRODUCED WITH THE FOLLOWING SECURITY MEASURES: SPECIAL DOCUMENT PAPER, INK SCREENS, WATERMARK, BACKGROUND DESIGNS, HOLOGRAM AND OTHER SECURITY FEATURES NOT LISTED AND DO EXCEED DOCUMENT SECURITY INDUSTRY GUIDELINES

February 6, 2025
GI Report No LG678590292
ROUND BRILLIANT

| | | | | | | | | | | | |
|-----------------------|--------------|------------------|---------------|-----------|-------|-------|------------------------------------|---------|-----------|----------|--------------------|
| 2.02 - 8.07 X 5.01 MM | 2.01 CARATS | FANCY VIVID PINK | VS 2 | IDEAL | 62.2% | 57% | Medium to Slightly Thick (Faceted) | Pointed | Excellent | Slight | 4mm 1 Carat 500902 |
| Carat Weight | Carat Weight | Color Grade | Clarity Grade | Cut Grade | Depth | Table | Grade | Culet | Polish | Symmetry | Fluorescence |

Comments:
This Laboratory Grown Diamond was created by Chemical Vapor Deposition (CVD) growth process.