



ELECTRONIC COPY

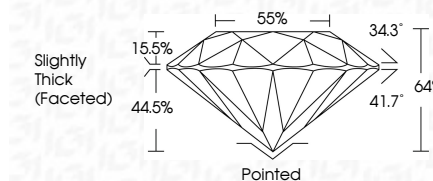
LG678585398
Report verification at igi.org



September 25, 2025
IGI Report Number **LG678585398**
Description **LABORATORY GROWN DIAMOND**
Shape and Cutting Style **ROUND BRILLIANT**
Measurements **8.95 - 8.98 X 5.74 MM**

GRADING RESULTS

Carat Weight **2.82 CARATS**
Color Grade **F**
Clarity Grade **VVS 2**
Cut Grade **VERY GOOD**

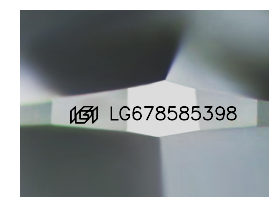


ADDITIONAL GRADING INFORMATION

Polish **VERY GOOD**
Symmetry **EXCELLENT**
Fluorescence **NONE**
Inscription(s) **IGI LG678585398**
Comments: This Laboratory Grown Diamond was created by Chemical Vapor Deposition (CVD) growth process. Type IIa

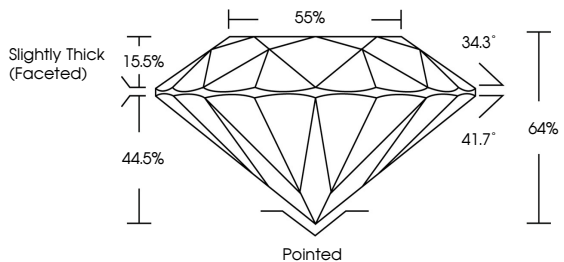


September 25, 2025
IGI Report No LG678585398
ROUND BRILLIANT
8.95 - 8.98 X 5.74 MM
2.82 CARATS
F
VVS 2
VERY GOOD
G4%
65%
Slightly Thick (Faceted)
Pointed
VERY GOOD
EXCELLENT
NONE
IGI LG678585398
Comments: This Laboratory Grown Diamond was created by Chemical Vapor Deposition (CVD) growth process. Type IIa

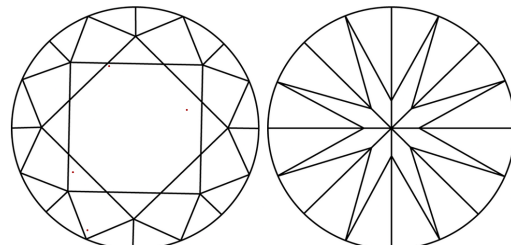


Sample Image Used

PROPORTIONS



CLARITY CHARACTERISTICS



KEY TO SYMBOLS

Red symbols indicate internal characteristics.
Green symbols indicate external characteristics.

COLOR

D E F G H I J Faint Very Light Light

CLARITY

IF WS¹⁻² VS¹⁻² SI¹⁻² I¹⁻³
Internally Flawless Very Very Slightly Included Very Slightly Included Slightly Included Included

